

LORD HOWE ISLAND

2020

Omniche Holidays - Exotic South Pacific. Expertly Packaged

EXOTIC SOUTH PACIFIC



Exotic South Pacific. Expertly packaged.

Head Office:

Level 1/ 345 Ann Street, Brisbane, Qld 4000

Free Call: 1800 111 653

Phone: 07 3221 3381 Fax: 07 3221 7899 Email: res@omnicheholidays.com

www.omnicheholidays.com

EXOTIC SOUTH PACIFIC

Omniche Holidays - Exotic South Pacific. Expertly Packaged 2020



Lord Howe Island



Cook Islands



Fiji



Tahiti

Omniche Holidays' Booking Terms & Conditions:

The summaries of these booking terms & conditions apply to all Omniche Holidays bookings. Full booking terms & conditions can be downloaded from www.omnicheholidays.com. Everyone named in the booking will be deemed to have accepted these conditions.

Suppliers: Omniche Holidays does not itself provide transport, accommodation, tours and/or events. In making your travel bookings, we act only as an agent for other service providers, whose terms and conditions may limit or exclude their liability to you.

Brochure: Validity from 01 November 2019 to 31 December 2020 and should be used as a guide only.

How to Book: Call or visit a licensed travel agent who will assist you in making a reservation. Your licensed travel consultant will request a reservation on your behalf and will be responsible for communicating your requirements to us, managing your booking and forwarding your payment to us. Anything not specifically included in the quoted holiday package is at your own expense.

Booking Fee: Your travel agent may apply a booking fee in addition to the price Omniche Holidays quotes them for your holiday. Additionally, Omniche Holidays may charge a booking fee.

Prices: The prices in this brochure are correct as at 01 November 2019 and are subject to change. All prices are an indication and are based on the cheapest tour option. All prices have been calculated based on per person for travel during low season. Low season travel may vary between destinations and service providers, please call us for more details. Omniche Holidays is not responsible for currency fluctuations and should these change, we reserve the right to apply a surcharge if applicable.

Payments: A deposit of \$200 per person plus any applicable airfare is required within 3 days of written confirmation. Balance is required 90 days prior to departure date for Tahiti and 60 days prior for all other destinations, or earlier if specified in individual package conditions. Omniche Holidays may cancel the bookings and retain your deposit if payment hasn't been received by the due date.

Cancellations: Cancellations after deposit payment will not be refunded. Cancellations after final payment may incur cancellation fees charged by suppliers amounting to all or part of the cost paid. No refund is available for cancellations after the holiday has commenced or in respect of services not utilised.

Alterations by you: If you alter your package after confirmation, Omniche Holidays may charge a fee of \$50 per person, in addition to any charges levied by suppliers.

Product Descriptions: Omniche Holidays makes no specific representation as to the standard, class or description of accommodation or services provided.

All descriptions featured are provided by suppliers, and facilities may change at any time.

Star Rating: While all care is taken promoting each property's rating, ratings should be used as a guide only and may change throughout the year as properties' circumstances change. The star ratings in this brochure are represented by palm trees as they do not meet the AAA Tourism Star Rating Scheme. All properties represented are self-rated, decided on by individual properties and is not in the opinion of Omniche Holidays.

Images: All images are used as a guide only and may be of varying room types. While all care has been taken to acknowledge Photographer's image credits, it is beyond our control should we have missed any acknowledgements.

Travel Insurance: Travel insurance is strongly recommended by the Department of Foreign Affairs and Trade for all overseas travel. Please consider purchasing a travel insurance policy of your choice when booking.

Health and Immigration: Each passenger is responsible for their own visa, passport (with at least 6 months validity), immigration, quarantine, customs, health and other requirements of the countries visited.

Limit of liability: Omniche Holidays provides its own services with due care and skill, but excludes all liability for any events beyond our control. We do not accept liability whatsoever for loss or damage including but not limited to physical and psychological injury, and loss or damage to property that may arise with the supply of goods or services provided by suppliers.

Destinations: Omniche Holidays makes no representation as to the safety and conditions that may exist at any destination. You should obtain travel advice from the Australian Department of Foreign Affairs and Trade (www.smarttraveller.gov.au).

Unhappy?: If you are dissatisfied with an aspect of your holiday it is vital that you advise the supplier's manager of your dissatisfaction and they will try to solve the problem locally. If unable to get satisfaction from management you should immediately notify Omniche Holidays, preferably in writing, stating your reasons, and we will act immediately to assist you. Omniche Holidays cannot action appropriately if a complaint is lodged upon your return, which has not been previously drawn to the attention of the supplier.

Privacy: The client consents to providing us with necessary personal information for the purpose of making and completing travel related arrangements on their behalf. Omniche Holidays will only discuss booking information with the clients or their travel agent.

Law of contract: The laws of Australia govern these booking conditions and subject to any law which is expressly not consistent with this, any action arising in any way related with the holiday may be brought only in an Australian court.

Head Office: Level 1/ 345 Ann Street, Brisbane, Qld 4000

Free Call: 1800 111 653 Ph: 07 3221 3381 Fax: 07 3221 7899 res@omnicheholidays.com

SOUTH PACIFIC MAP

Australia
Brisbane
Sydney

New Zealand

Solomon Islands

Vanuatu

New Caledonia

Norfolk Island

Lord Howe Is.

Fiji

Tonga

Samoa

Niue

Cook Islands

Tahiti

OMNICHE HOLIDAYS
Exotic South Pacific. Expertly packaged.

New Caledonia

Samoa

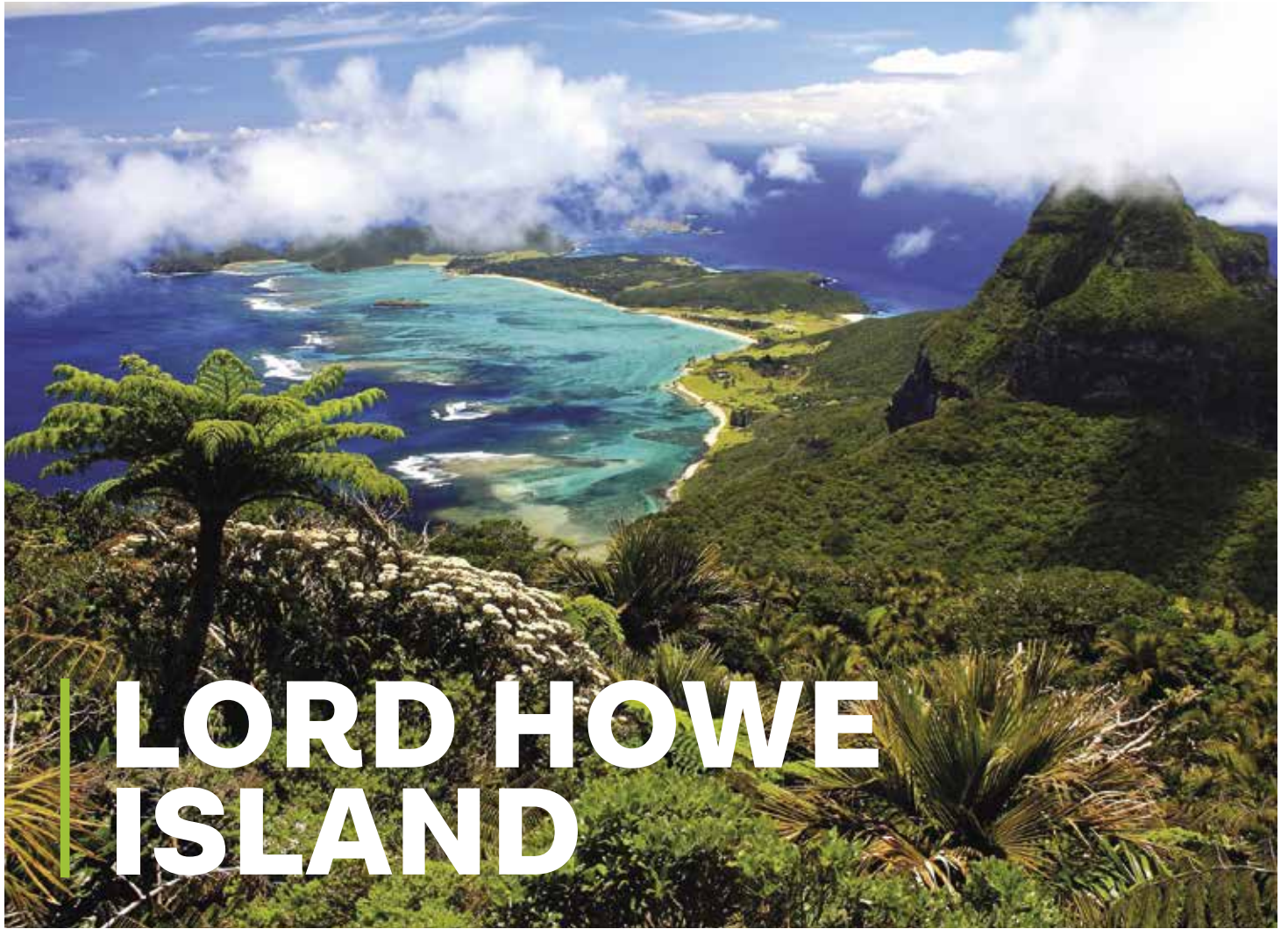
Lord Howe Island

Norfolk Island

© Omniche Holidays 2019. This map is for illustrative purposes only.

EXOTIC SOUTH PACIFIC

- | | | | | | |
|--------------------------|---------------------------|--------------------|-------------------------|-------------------|-----------------------|
| Adults Only | Cable TV | Gym/Fitness Centre | Kitchen | Reception | Spa |
| Air Conditioning | Café | Hair Dryer | Laundry | Reception - 24hr | Swimming Pool |
| Arrival/Departure Lounge | CD Player | Hire Car | Laundry Service | Refrigerator | Tea/Coffee Facilities |
| Bar | Ceiling Fan | In-House Movies | Microwave | Restaurant | Telephone |
| Barbeque | Child Minding/Babysitting | In-Room Safe | Mini Bar | Room Service | Tennis Court |
| Bath | Day Spa | Insect Screens | Ocean Views | Sauna | Terrace/Balcony |
| Beachfront Accommodation | Disabled Facilities | Internet | Outdoor Shower | Self Contained | Television |
| Bedrooms 1,2,3,4 | Dishwasher | Ipod Dock | Overwater Accommodation | Shared Facilities | Water Sports |
| Bicycles | DVD | Iron | Parking | Shop | Wedding Chapel |
| Business Centre | Golf course 9/18 Hole | Kayaks | Picnic Baskets | Shopping Nearby | Wi-Fi Facilities |
| Butler Service | Gas Heating | Kids Club | Plunge Pool | Shower | Wi-fi - In Room |



LORD HOWE ISLAND



Lord Howe Island is widely regarded as the most beautiful island in the Pacific, the closest island getaway to Sydney and a part of New South Wales. At any one time, you'll be one of only 400 visitors on Lord Howe Island. It's less than two hours flying from either Sydney or Brisbane off Australia's east coast. It is one of just four island groups to be inscribed on UNESCO's World Heritage list for the global significance of its natural beauty and heritage.

Lord Howe Island was first discovered by Lieutenant Henry Lidgbird Ball, commander of the First Fleet ship, 'Supply' in 1788, while en route between Sydney Cove and the penal settlement of Norfolk Island. Ball named the uninhabited island after British Admiral Richard Howe and the sea stack to the south he named Balls Pyramid, after himself.

It's a timeless natural paradise, where the pace is relaxed but where there are plenty of activities and adventures to choose from. Unspoiled and uncrowded beaches with perfect golden sands entice surfers, swimmers and sybarites. Families love the safety and variety of kids' activities; lovers find romance in the island's secluded corners, natural beauty, luxury lodges and fine dining establishments. For adventurers, there are bushwalks and more strenuous hikes, including Mt Gower, rated as one of the world's best day walks. And to ease tired muscles, there is a choice of spa treatments.

The crystal lagoon is bordered by the world's most southerly coral reef. Just wander in off the beach to snorkel among colourful tropical and sub-tropical fish, turtles and other marine life, or head further off-shore to SCUBA dive on world-class sites. The water is so clean and clear, it's like swimming in an aquarium. The island is laced with delightful walking trails through palm and banyan forests, emerging at spectacular cliff-top vistas. Lord Howe is also Australia's premier bird watching destination, with over 14 species of seabirds nesting on the island - and most readily seen, including one of the world's rarest birds, the Lord Howe Island Woodhen.

To set foot on Lord Howe Island is to escape to a pristine environment, where you'll be met with friendly hospitality and the kind of holiday experience that you'll never want to leave. A wide range of accommodation styles, sumptuous spa treatments, beautiful hotels and great dining make Lord Howe Island the perfect getaway.



Accommodation Listings

Arajilla Retreat	p. 06
Beachcomber Lodge	p. 06
Ebbtide Apartments	p. 07
Leanda-Lei Apartments	p. 07
Lorhiti Apartments	p. 08
Milky Way Holiday Apartments	p. 08
Ocean View Apartments	p. 09
Somerset Apartments	p. 08
The Broken Banyan	p. 06



Coral Tour

Coral Viewing & Snorkelling Tour

Experience the world's southernmost coral reef and immerse yourself in the diversity of Lord Howe Island's amazing marine environment. View the pristine beauty of one of the world's healthiest untouched reef systems on board a Glass Bottom Boat with Lord Howe Environmental Tours.



Nature Tour

North Bay Nature & Turtle Tour

Join a half day of discovery at beautiful North Bay. Enjoy an informative Glass bottom boat cruise to the Bay, viewing turtles, corals and tropical fish on the way. Snorkel a sunken ship which is home to hundreds of fish and coral species. Enjoy a morning or afternoon tea & then choose from a geology walk; Mt Eliza hike or exploring the Old Gulch ocean inlet.



Hiking Tour

Mt Gower Trek

The Mount Gower Trek justly deserves its ranking as one of Australia's top day walks. During the 9 hour trek you will enjoy the views from the summit at 875 metres across Balls Pyramid, Mt Lidgbird, the lagoon and the Island's northern settlement area.

Arajilla Retreat

Renowned for its warm and friendly service and laid back ambience, Arajilla Retreat encapsulates the very essence of Lord Howe Island, offering guests a haven of tranquillity and peace. Arajilla is perfectly positioned on the northern sheltered end of the Island's lagoon just behind Old Settlement Beach, where meandering pathways lead through native gardens to the beach, to its serene Ayurvedic Spa luxurious suites and renowned restaurant. Explore the extraordinary scenery and wildlife of World Heritage listed Lord Howe Island. Walk bush trails, climb mountains, swim, surf, snorkel, fish, cycle around the Island, play golf beneath the mountains, take it easy on a deserted beach, enjoy a massage or treatment, savour fine food and wine. And it's all less than a two hour flight from Sydney or Brisbane.

After a day of surfing, fish feeding, mountain climbing and hiking, boating, biking, fishing, swimming with turtles, diving and snorkeling, picnicking, lying under a Banyan Tree reading a book or enjoying a treatment at our Day Spa, the delights of Arajilla's restaurant await.

Facilities & Rating



The ultimate luxury island retreat



Beachcomber Lodge



Beachcomber Lodge is one of the original restored Island homesteads, secluded amongst tropical gardens and Kentia palms, with splashes of colour from fragrant frangipanis and hibiscus surrounding six private, self-contained apartments. A short stroll from Beachcomber down palm fringed roads will take you to either stunning Ned's Beach, renowned for fish feeding and snorkeling, or Middle Beach, a secluded and private beach. Beachcomber Restaurant is open 3 nights a week and the property is also located close to shops, cafes, restaurants, post office, all beaches, tours, attractions, and only minutes' walk to the beginning of several bush walking tracks. We strive to ensure each stay at Beachcomber is memorable, comfortable and relaxing – and it is great to see many that stay with us return year after year!

Facilities & Rating



Family friendly boutique bed & breakfast

The Broken Banyan



The Broken Banyan is an adults only property with six one bedroom self contained apartments with open plan kitchen, dining and lounge area, with queen bed and ensuite.

The south facing verandahs overlook the luscious gardens with barbeques and outdoor setting for your enjoyment, providing much needed peace and tranquility. Guests also have access to a guest laundry and transit lounge with telephone and library.

The Broken Banyan are located close to shops, restaurants and beaches, with evening transfers to restaurants to make the most of your time on beautiful Lord Howe Island.

Facilities & Rating



Self contained adults only apartments that's great for couples

Ebbtide Apartments

Five stylish self catering apartments suited to couples looking for privacy and comfort in a tranquil northerly aspect on beautiful World Heritage Lord Howe Island.

Close to popular Neds Beach where you can hand feed the colourful fish and view coral from the shore.

Your friendly hosts will meet you on arrival at the airport and give you an introduction to the World Heritage Island and its many wonders.

Transfers to and from evening restaurants and assistance with activity bookings are just some of the ways Julie and Emma will make your visit easy and memorable.

There's usually fresh fish available to go on the BBQ along with fruit and veg from the garden

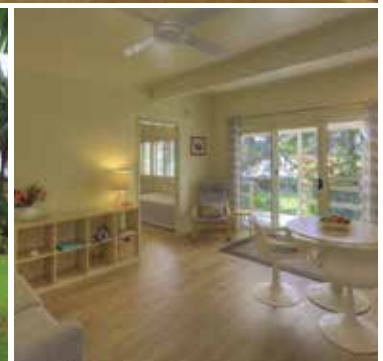
All rooms have full kitchens, private decks and BBQ facilities. Linen and beach towels are provided.



Facilities & Rating



Secluded ,sunny North Easterly aspect,
5 private rooms at Neds Beach.



Leanda-Lei Apartments

Set amongst 5 acres of lawns, gardens and kentia palm forest our family operated apartments are centrally located off Middle Beach Road – 200m to Museum, Visitor Information Centre and Cafe, 300m to Lagoon Beach, 500m to Middle Beach and 20m to the main grocery store.

We offer 3 types of accommodation: large superior studio apartments (king or twin beds), one bedroom apartments (king or twin beds), and two bedroom apartments (queen bed in one bedroom and 2 single or king in second bedroom). One and two bedroom apartments have dining/ lounge area. All apartments have kitchen facilities, including gas cook top, microwave etc. TV and Wi-Fi are available in all apartments. Each apartment has a covered outdoor area and Weber BBQ's are located throughout the grounds.

Complimentary airport transfers and evening transport to restaurants are included. Guests at Leanda Lei have priority booking for all boating activities with Marine Adventures (North Bay Tours and Snorkelling trips). Our office is open every morning to assist you with organising your daily activities if required. Push bikes and cars are available for hire on the premises – it is advisable to pre book car hire.

What better place to stay – Leanda Lei is the idyllic gateway to explore World Heritage Lord Howe Island.

Facilities & Rating



Central location, close to Lagoon Beach, shop and café



Lorhiti Apartments



Offering an oasis of seclusion, in a prime location, Lorhiti is the closest resort with private access to stunning Ned's Beach. Central to Island facilities, beaches, tours, and attractions.

Our 6 Bali/Thai style one-bedroom apartments have a sunny North/East facing aspect. Free Wi Fi, flat screen TV/CD/DVD, full kitchen, veranda, ceiling fans, beach umbrella/towels, linen/towels, ceiling fans, coffee plunger, sandwich press, iron/board, vacuum cleaner, back pack, hair dryer, clock radio, sarongs, bathrobes, torch, games, cards and umbrellas.

Free airport transfers & free nightly transfers to all restaurants.

Winner of Trip Advisor "Certificate of Excellence" for 7 years running.

Facilities & Rating



Closest Resort to Ned's Beach.
Luxury, Peaceful, Seclusion & Privacy

Somerset Apartments



Somerset Apartments are perfectly situated between Neds Beach and the Lagoon, on a level area of the Island, allowing easy walking and biking to nearby shops, restaurants and the Visitor Centre. The Resort also offers assistance to guests with complimentary airport transfers and evening dinner transfers. The 25 self-contained units are nestled in subtropical palm groves alive with splashes of colour from Hawaiian hibiscus and fragrant frangipani flowers. Somerset Apartments offers accommodation options to suit all visitors to Lord Howe Island. Choose from a range of Studio, One bedroom or Family Units.

Somerset Apartments is the ideal location for visitors wishing to explore and discover the natural attractions that have made Lord Howe Island famous.

Facilities & Rating



Centrally located apartments
in a subtropical paradise

Milky Way Holiday Apartments

Bordering Old Settlement Beach, set in the peaceful seclusion of a palm & banyan oasis, Milky Way Apartments have been described by many guests as "the best location on the island". A small tropical reef system is just off the beach & resident Green turtles come in to interact with swimmers at the waters edge.

Featuring 1 bedroom Mooreii standard apartments and recently renovated 1 & 2 bedroom Belmoreana superior apartments. All apartments have everything you need, with fully equipped kitchens, ensuites and balconies. We provide a complimentary food & fruit starter package, airport transfers, and evening transfers to all island restaurants. There are also wireless internet & laundry facilities available!

Milky Way Apartments offer view of the North Hills from Malabar to Dawson's Point, and whether for a couple or a family wanting a quiet time away from it all Milky Way Apartments is the place to stay.

Facilities & Rating



Home away from home on the beach



Ocean View Apartments



Ocean View is ideally situated off the main road and is close to many island facilities including restaurants, cafés, general stores and the post office. Just 100 metres away you will find the jetty, amazing beaches and short climb up the back paddock and you can capture amazing panoramic views of the island & lagoon.

Ocean View Apartments boasts 13 modern studios and 2 family units with fully equipped kitchenettes, all linen provided, back packs, TVs, ceiling fans, heaters for winter, hair dryers, rainwater, and insect screens.

Offers include:- Use of the large recreational area, super grass tennis court with tennis gear supplied, large saltwater swimming pool, covered BBQ's, guest laundry, and transport nightly to restaurants.

There are pushbikes for hire, a public phone & WiFi available at a small fee.

We now have a boat shed on the Lagoon foreshore which gives our guests an array of equipment to enjoy the island with. All the equipment is inclusive for our guests. There is snorkelling gear, wetsuits, kayaks and paddle boards, There are also tables and chairs that you can sit have lunch and enjoy the view or watch the sunset.

At Ocean View our Guests have priority for our, fishing trips, sightseeing tours, lagoon & passage fishing, specialty snorkelling tours and Private Charters on M.V. CHAMAELEON.

Please note however there are additional fees for their use.

SUP/KITE/SURF LORD HOWE ISLAND also operates from this Boatshed, this new business is owned and run by Ocean View, we offer Lessons and guided tours for Stand up paddle boarding, Kiteboarding and surfing. We are an ASI Accredited SUP School.

Facilities & Rating



Ocean View Apartments - original Wilson family business with personal service

EXOTIC SOUTH PACIFIC

Omniche Holidays - Exotic South Pacific. Expertly Packaged

2020



Cook Islands



Vanuatu



Lord Howe Island



Fiji



Solomon Islands



Samoa



Niue



Norfolk Island



Tahiti



Tonga



New Caledonia



Exotic South Pacific. Expertly packaged.

Travel Agent:

Head Office:

Level 1/ 345 Ann Street, Brisbane, Qld 4000

Free Call: 1800 111 653

Phone: 07 3221 3381 Fax: 07 3221 7899 Email: res@omnicheholidays.com

www.omnicheholidays.com

IATA No. 02-359486