

NORFOLK ISLAND 2020

Omniche Holidays - Exotic South Pacific. Expertly Packaged

EXOTIC SOUTH PACIFIC

OMNICHE
HOLIDAYS

Exotic South Pacific. Expertly packaged.

Level 1/ 345 Ann Street, Brisbane, Qld 4000

Free Call: 1800 111 653

Phone: 07 3221 3381 Fax: 07 3221 7899 Email: res@omnicheholidays.com

www.omnicheholidays.com

EXOTIC SOUTH PACIFIC

Omniche Holidays - Exotic South Pacific. Expertly Packaged 2020



Omniche Holidays' Booking Terms & Conditions:

The summaries of these booking terms & conditions apply to all Omniche Holidays bookings. Full booking terms & conditions can be downloaded from www.omnicheholidays.com. Everyone named in the booking will be deemed to have accepted these conditions.

Suppliers: Omniche Holidays does not itself provide transport, accommodation, tours and/or events. In making your travel bookings, we act only as an agent for other service providers, whose terms and conditions may limit or exclude their liability to you.

Brochure: Validity from 01 November 2019 to 31 December 2020 and should be used as a guide only.

How to Book: Call or visit a licensed travel agent who will assist you in making a reservation. Your licensed travel consultant will request a reservation on your behalf and will be responsible for communicating your requirements to us, managing your booking and forwarding your payment to us. Anything not specifically included in the quoted holiday package is at your own expense.

Booking Fee: Your travel agent may apply a booking fee in addition to the price Omniche Holidays quotes them for your holiday. Additionally, Omniche Holidays may charge a booking fee.

Prices: The prices in this brochure are correct as at 01 November 2019 and are subject to change. All prices are an indication and are based on the cheapest tour option. All prices have been calculated based on per person for travel during low season. Low season travel may vary between destinations and service providers, please call us for more details. Omniche Holidays is not responsible for currency fluctuations and should these change, we reserve the right to apply a surcharge if applicable.

Payments: A deposit of \$200 per person plus any applicable airfare is required within 3 days of written confirmation. Balance is required 90 days prior to departure date for Tahiti and 60 days prior for all other destinations, or earlier if specified in individual package conditions. Omniche Holidays may cancel the bookings and retain your deposit if payment hasn't been received by the due date.

Cancellations: Cancellations after deposit payment will not be refunded. Cancellations after final payment may incur cancellation fees charged by suppliers amounting to all or part of the cost paid. No refund is available for cancellations after the holiday has commenced or in respect of services not utilised.

Alterations by you: If you alter your package after confirmation, Omniche Holidays may charge a fee of \$50 per person, in addition to any charges levied by suppliers.

Product Descriptions: Omniche Holidays makes no specific representation as to the standard, class or description of accommodation or services provided.

All descriptions featured are provided by suppliers, and facilities may change at any time.

Star Rating: While all care is taken promoting each property's rating, ratings should be used as a guide only and may change throughout the year as properties' circumstances change. The star ratings in this brochure are represented by palm trees as they do not meet the AAA Tourism Star Rating Scheme. All properties represented are self-rated, decided on by individual properties and is not in the opinion of Omniche Holidays.

Images: All images are used as a guide only and may be of varying room types. While all care has been taken to acknowledge Photographer's image credits, it is beyond our control should we have missed any acknowledgements.

Travel Insurance: Travel insurance is strongly recommended by the Department of Foreign Affairs and Trade for all overseas travel. Please consider purchasing a travel insurance policy of your choice when booking.

Health and Immigration: Each passenger is responsible for their own visa, passport (with at least 6 months validity), immigration, quarantine, customs, health and other requirements of the countries visited.

Limit of liability: Omniche Holidays provides its own services with due care and skill, but excludes all liability for any events beyond our control. We do not accept liability whatsoever for loss or damage including but not limited to physical and psychological injury, and loss or damage to property that may arise with the supply of goods or services provided by suppliers.

Destinations: Omniche Holidays makes no representation as to the safety and conditions that may exist at any destination. You should obtain travel advice from the Australian Department of Foreign Affairs and Trade (www.smarttraveller.gov.au).

Unhappy?: If you are dissatisfied with an aspect of your holiday it is vital that you advise the supplier's manager of your dissatisfaction and they will try to solve the problem locally. If unable to get satisfaction from management you should immediately notify Omniche Holidays, preferably in writing, stating your reasons, and we will act immediately to assist you. Omniche Holidays cannot action appropriately if a complaint is lodged upon your return, which has not been previously drawn to the attention of the supplier.

Privacy: The client consents to providing us with necessary personal information for the purpose of making and completing travel related arrangements on their behalf. Omniche Holidays will only discuss booking information with the clients or their travel agent.

Law of contract: The laws of Australia govern these booking conditions and subject to any law which is expressly not consistent with this, any action arising in any way related with the holiday may be brought only in an Australian court.

Head Office: Level 1/ 345 Ann Street, Brisbane, Qld 4000

Free Call: 1800 111 653 Ph: 07 3221 3381 Fax: 07 3221 7899 res@omnicheholidays.com

SOUTH PACIFIC MAP

Australia
Brisbane
Sydney

Solomon Islands

Vanuatu

New Caledonia

Fiji

Tonga

Samoa

Niue

Cook Islands

Tahiti

Norfolk Island

Lord Howe Is.

New Zealand

OMNICHE HOLIDAYS
Exotic South Pacific. Expertly packaged.

Fiji

Samoa

Lord Howe Island

Norfolk Island

© Omniche Holidays 2019. This map is for illustrative purposes only.

EXOTIC SOUTH PACIFIC

Adults Only	Cable TV	Gym/Fitness Centre	Kitchen	Reception	Spa
Air Conditioning	Café	Hair Dryer	Laundry	Reception - 24hr	Swimming Pool
Arrival/Departure Lounge	CD Player	Hire Car	Laundry Service	Refrigerator	Tea/Coffee Facilities
Bar	Ceiling Fan	In-House Movies	Microwave	Restaurant	Telephone
Barbeque	Child Minding/Babysitting	In-Room Safe	Mini Bar	Room Service	Tennis Court
Bath	Day Spa	Insect Screens	Ocean Views	Sauna	Terrace/Balcony
Beachfront Accommodation	Disabled Facilities	Internet	Outdoor Shower	Self Contained	Television
Bedrooms 1,2,3,4	Dishwasher	Ipod Dock	Overwater Accommodation	Shared Facilities	Water Sports
Bicycles	DVD	Iron	Parking	Shop	Wedding Chapel
Business Centre	Golf course 9/18 Hole	Kayaks	Picnic Baskets	Shopping Nearby	Wi-Fi Facilities
Butler Service	Gas Heating	Kids Club	Plunge Pool	Shower	Wi-fi - In Room



NORFOLK ISLAND



'Welkam yorlyi tu Norfolk Ailen'
 - Welcome everyone to Norfolk Island

Norfolk's History

Norfolk Island has a fascinating history of settlement. East Polynesians were the first to settle on the island around the 14th Century, however they had left by 1774 when Captain James Cook first sighted the island. Two years later the American Revolution began and Britain had to find new territories for the deportation of convicts. Drawing on Cook's discoveries, Australia and Norfolk Island were selected and the First Fleet was sent off to them in 1787. Convicts and free settlers lived on the island until it was abandoned in 1814. The Second Penal Settlement established itself from 1825 – 1855 and Norfolk Island was once again transformed into a prison isle. Meanwhile, events were unfolding eastward in the Pacific which would eventually link to this small isle. In 1788 HMAV Bounty left England on a mission to gather breadfruit trees from Tahiti for the West Indies planters. A startling turn of events including love affairs with Tahitian women and a mutiny on The Bounty saw Fletcher Christian and his crew create a new life for themselves on Pitcairn Island with Tahitian women and men. They burnt the Bounty and remained undetected until an American whaling ship discovered the hideaway in 1808. In 1854 Queen Victoria gave approval for Pitcairn Islanders to move to Norfolk Island. In June 1856 a community of 194 arrived on Norfolk Island and the descendants of those settlers still inhabit this beautiful idyllic retreat today.

The Norfolk Experience

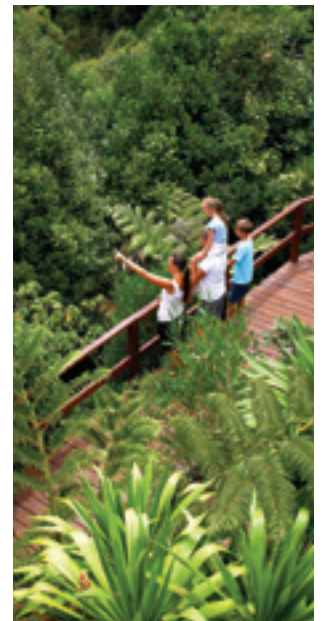
There are so many activities on Norfolk Island to keep you entertained. There are several restaurants and eateries on the island, ranging from a la carte and family friendly restaurants to club bistros and takeaways. Cafes offer hearty breakfasts and evening meals also. The paddock to plate approach to Norfolk Island dining means food tastes just as it should, full of flavour, grown in its natural season and rich with all the right nutrients. You can hire a car and cruise along the winding roads or for the more active, jump on a mountain bike and enjoy an easy ride with stunning scenery. Lose yourself in the wild mountain sides that form Norfolk Island National Park. Wander the lush walking tracks and you'll encounter giant vines, tree ferns, delicate flowers and many rare rainforest species. World Heritage listed Kingston and Arthur's Vale Historic Area is an attraction in itself. There you will find fascinating places including: the Cemetery (convict headstones provide detailed evidence of a horrific era) and Government House. Hire a rod and casually cast your line from one of the two piers. Join a charter fishing trip with a local expert and find yourself reeling in succulent Sweet Lip, Kingfish and Wahoo – just to name a few. To complete your day, cook your catch on an open BBQ.





Accommodation Listings

A-Frame Chalets @ Mokuu	p. 08	Hibiscus Regal Apartments	p. 15
Aataren Villas	p. 08	Highlands Norfolk Island	p. 15
Aloha Apartments	p. 08	Islander Lodge Apartments	p. 15
Broad Leaf Villas	p. 09	Jacaranda Park Holiday Cottages	p. 16
Burnt Pine Boutique Apartments	p. 09	Kentia Holiday Apartments	p. 16
Castaway Norfolk Island	p. 09	Norfolk Holiday Apartments	p. 17
Christian's Of Bucks Point	p. 10	Ocean Breeze Cottages	p. 17
Coast Norfolk Island	p. 11	Paradise Hotel & Resort	p. 17
Cumberland Resort & Spa	p. 11	Seaview Norfolk Island	p. 17
Cumerland Resort & Spa - The White House	p. 12	South Pacific Resort Hotel	p. 17
Daydreamer Apartments	p. 12	The Crest Apartments	p. 13
Endeavour Lodge	p. 12	Tintoela of Norfolk	p. 19
Governor's Lodge Resort Hotel	p. 14	Tudor Apartments	p. 19
Hibiscus Crown Apartments	p. 15	Whipering Pines Cottages	p. 19



Pinetree Tours

Norfolk Island's
Premier Tour Company

We've got Norfolk Covered!



Pinetree Tours

Wonderland by Night

The setting is 10 acres of magical Norfolk pines & bushland lit up like an enchanted forest. Meander along (or ride in the 'moon buggy') a gentle winding path with Archie, a descendant of the Bounty mutineers, as he recites his poems and lights up the dioramas.



Pinetree Tours

Ghost Tour

This evening you will enjoy a 2 course dinner in an old convict building hosted by the resident ghost. As this is an old home, there are no bar facilities, so if your passengers would like juice, soft drink, wine or beer they will need to bring their own. Afterwards enjoy a lantern walk through the ruins listening to Ghost Stories.



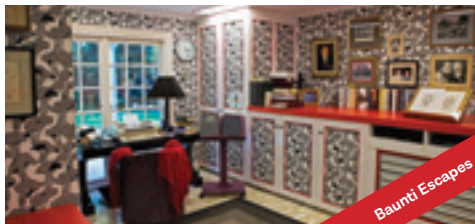
Pinetree Tours

Behind the Hedges

Includes a visit to four properties on the island observing the some of the islands cottage industries. Your people will have the opportunity to buy some local pottery – great souvenirs. And now, exclusive to Pinetree Tours, you will visit Sweeties and learn about chocolate making on Norfolk Island. Morning tea is included.

Baunti Escapes

Norfolk Island's
Boutique Tour Operator



Baunti Escapes

Colleen McCullough Home Tour

Colleen McCullough, world-renowned author of 24 books called Norfolk Island home for almost 36 years. She and husband, Norfolk Islander, Ric Robinson, created a luxurious hideaway and maintained their privacy to ensure that Colleen had the perfect environment for her writing. Some of her most powerful titles were created in this much-loved sanctuary.

Her beloved property "Out Yenna" is now open exclusively to Baunti Escapes customers. You are escorted through her magnificent home and are able to view Ric and Colleen's priceless collection of artefacts gathered on their travels all over the world. You will see where her books were researched and where she worked into the wee hours creating the incredible tales that have sold in their millions in so many different languages.



Baunti Escapes

The Commandants' Dinner

Imagine dining with a Commandant!
This factual yet fun dinner theatre is Norfolk Island's newest interactive show and a great way to learn about Norfolk's history. The cast of actors will take you on an entertaining journey back in time. You will be enthralled by the Commandant's stories about the notorious Convict Settlements on Norfolk Island and how the convicts were treated by sadists and reformers.

Listen to a chilling recall of one of the infamous rebellions. Marvel at how the Commandants and their families adapted to life in a Norfolk Island penal colony, recreating a little piece of England in the Pacific. Explore their great challenges, impressive successes and shameful secrets.



Baunti Escapes

Breakfast Bushwalk

Your walk will take you through diverse habitats from rain forest to clifftops, between enormous pines and white-woods and surrounded by seabirds. While the topography is hilly, the pace is relaxed and our guides cater to a range of fitness levels. Your efforts will be richly rewarded by a delicious barbeque breakfast with all the trimmings, which awaits. Learn about our flora and fauna and see some of our 40 endemic species of plants and birds. For those that just want to join us for breakfast come along! We will relax and meet up with the others for breakfast. Three walk/non-walk options available to suit all fitness levels!

Aata Orn Tours

Omniche Holidays' have selected unique history, culture & cuisine tours and experiences for your Norfolk Island Holiday

Discover, See, Make.



Aata Orn Tours



Aata Orn Tours



Aata Orn Tours

History in the Making

Visit convict work sites in historic Kingston and a small working museum set in the grounds of an island home. The tour focuses on demonstrations of hands-on activities such as shingle and rope making and a museum collection, which includes many unique artefacts. Learn also of the wonderful moments of enterprise and ingenuity that have allowed today's settlers to make Norfolk Island their home and see one of the Pitcairn settler's original houses.

World Heritage History Tour

The World Heritage listed (2010) Kingston and Arthur's Vale Historic Area (KAVHA) on Norfolk Island holds many historical treasures from Australia's past Colonial and Penal history. It also holds Australia's only connection to Polynesia along with a present day unique community full of its melded old English and Polynesian roots. Enjoy a short walk and immersion in the past and be surprised how close the present-day community is to the 230 year old Bounty/Pitcairn story. All of this is encapsulated in the KAVHA precinct.

Locavore Gourmet Dinner

Dine and enjoy your exclusive Locavore Gourmet Dinner in the Annex of No 9 Quality Row in Kingston. Soak up the intimate dining experience and ambiance in one of Norfolk's wonderful historic buildings built during the convict settlement period. Enjoy a glass of complimentary sherry on arrival, then dine by candlelight and taste Norfolk Island's home-grown Seasonal Produce, a three-course dinner followed by tea and coffee.

Omniche Exclusives

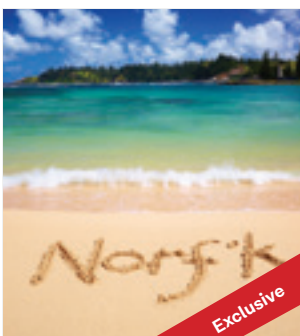
Exclusive experiences selected by our specialists - just for you!



Exclusive

Dusk Canapés Gathering

Exclusive to guests of Omniche Holidays, we encourage our valued on-island customers to meet and share their experiences of the island. This is why we invite our guests to meet at The Bounty Lodge to enjoy some canapés while you mix and mingle with fellow travellers to share holiday hints and tips.



Exclusive

Norfolk Language Class

Take the opportunity to learn some of this unique Norfolk Laengwij brought to Norfolk Island by the Pitcairners on 8th June 1856. Learn of the evolution of this marvellous language and the fascinating history of these people.



Exclusive

VIP Concierge Service & The World of Norfolk Exhibit

We offer service like no other on Norfolk Island, with our VIP On Island Concierge service just for guests of Omniche Holidays. This is a point of contact giving peace of mind that there is always someone on hand to assist with your holiday needs.

The Concierge Desk is located at The World of Norfolk Exhibit, which brings to life a series of stories that collectively encompass and celebrate Norfolk island, its people, unique history, landscapes and culture. Featuring world class visual displays and 28 custom built glass interpretation panels created to immerse you in a memorable "World".

Here you can collect your Bounty Pass, just one more exclusive inclusion to reward our customers, providing exclusive on island shopping & dining discounts. With service like this, you can relax knowing that you are in good hands!

Aloha Apartments

Set in pristine manicured gardens, Aloha Apartments are located right in the heart of Burnt Pine close to cafes, clubs, shops and restaurants yet just a 5-minute drive from historic Kingston and stunning Emily Bay.

The One and Two Bedroom Apartments offer all the comforts and conveniences of home with well equipped kitchens, dining and living area, TV and are perfect for families, couples, individual travellers or groups.

There are two apartment categories to choose from, Standard and Deluxe and the Deluxe Apartments have been recently renovated with new kitchens, furniture and wardrobes and offer a more spacious option. All apartments can accommodate up to 4 people.

Facilities at Aloha are exceptional with a swimming pool, BBQ's, departure lounge, book exchange, self-service laundry and a manned reception. Guests can also enjoy breakfast, lunch or dinner at the café conveniently located on-site.

Aloha Apartments offer the services and facilities of a hotel with the privacy, space and flexibility of a self-contained apartment and rest assured that our wonderful local friendly staff is on hand to look after you 7 days a week.



Facilities & Rating



With creature comforts and a central location - we're your island home!

Aataren Norfolk Island Villas



Aataren Villas is one of Norfolk Island's premier boutique properties. Set in 1 acre of sub-tropical gardens and conveniently located a short distance from the main shopping centre, restaurants and just five minutes from the historic precinct.

The 1-bedroom Villas, suitable for 2-3 people, open out to a sunny patio overlooking the garden. The 2-bedroom Villa features two well-appointed modern bathrooms (disabled access), leather recliners and spacious bedrooms which open out onto a large balcony. The 3-bedroom Villa is a two-storey house nestled within the lush surrounds, with a large modern kitchen, open-plan living/dining area and en-suite bathrooms.

Facilities & Rating



Spend your holiday on Norfolk Island and stay with us

A-Frame Chalets @ Mokutu



A boutique accommodation property with exceptional panoramic views across Norfolk Island's lush valleys and ridges to the mountains and ocean. Located a short drive from the golf course and beaches of beautiful historic World Heritage listed Kingston and a short stroll from Two Chimneys Winery, Mokutu is set on two acres of peaceful, private, sub-tropical gardens.

Ideal for families, groups and independent travellers. All room options are self-contained with separate kitchen, dining and living areas, bathroom, individual outdoor settings and convenient access to the swimming pool, garden and decks. All enjoy tranquil garden and mountain views while some offer additional panoramic valley and sea views. Mokutu offers a truly peaceful, relaxing family atmosphere with genuine friendly Norfolk Island hospitality.

Facilities & Rating



Panoramic views, iconic surroundings, and warm Norfolk hospitality

Broad Leaf Villas



Nestled in the upper reaches of Watermill Valley, our boutique Norfolk Island accommodation offers couples, families and friends a fresh and modern 4-star haven to relax, rejuvenate and reconnect with nature on this astounding South Pacific island. Five self-contained Norfolk Island villas put you conveniently close to the island's charming country town, heritage architecture, national parks and beautiful beaches, making Broad Leaf Villas the perfect base for a self-drive Norfolk Island holiday.

Facilities & Rating _____ 🌴🌴🌴🌴



Perfect haven to relax, rejuvenate and reconnect

Burnt Pine Boutique Apartments



Offering personalised experiences and fantastic self-contained apartments in the heart of town with stunning sea views and complementary "Home Made & Home Grown" continental breakfast.

Enjoy the view, chill poolside, share the beauty and join our Norfolk family for an enchanting experience.

We gift you with the perfect place to create wonderful memories and an opportunity to nourish all your senses and invite you to escape to our little bit of paradise.

Facilities & Rating _____ 🌴🌴🌴🌴



Outstanding ocean views in the middle of town

Castaway Norfolk Island

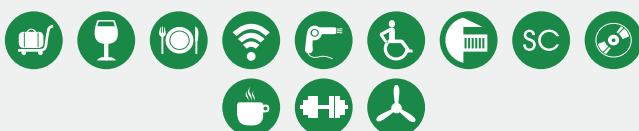
Situated in the heart of Burnt Pine, Norfolk's shopping, café and commercial precinct, Castaway Norfolk Island is freshly refurbished, offering well-appointed apartments and hotel-style rooms with friendly Island-style hospitality.

Enjoy the convenient onsite bar restaurant and Deck with panoramic mountain views, a full menu featuring the best of the fresh, local seasonal produce. The fresh vibrant décor and the latest fixtures and fittings are an invitation to kick back and soak up that holiday feeling.

The One bedroom Banyan Apartments are fully self-contained and overlook beautifully landscaped gardens and the famous banyan tree. The Garden View Rooms are streamlined with modern bathrooms and walk-in showers and look across the garden to beautiful Phillip Island. Unwind at the bar, on the deck or the patio of your room. Complimentary laundry facilities, paid WIFI internet access, king sized beds and flat screen LCD TV and radios ensure your comfort with on site Owner/Managers and a gym for your convenience.

Castaway Norfolk Island is a short stroll to the shops, cafes and tour companies but while you are at the heart of everything, you enjoy the peace and quiet of a secret hideaway.

Facilities & Rating _____ 🌴🌴🌴🌴



Centrally located and modern with a restaurant, bar and friendly atmosphere



Christian's of Bucks Point

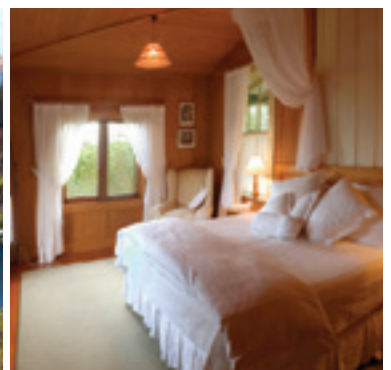


Indulge in Norfolk's most awarded luxury cottage accommodation, Christian's of Bucks Point. This beautifully restored island home was originally built in 1914 by a direct descendant of Fletcher Christian the Bounty mutineer. Situated on over two acres of land overlooking Ball Bay and Phillip Island, this truly stunning home awaits you with its charm and peaceful atmosphere, created over many years of island hospitality.

This self-contained property will be exclusively yours, perfect for a romantic escape for two or ideal for a large family or corporate group of up to six. There are three private bedrooms (king with ensuite, king and queen) and two additional bathrooms, fully equipped country style kitchen/dining room, lounge room, sitting room and designated office for the working traveller. It contains the added convenience and comfort of electric blankets, internal laundry, hairdryers, IDD telephone, computer and internet, fax and photocopier. And to compliment your stay, a late model hire car with insurance is included.

Experience the luxury of all modern facilities including a BOSE theatre surround sound system, satellite TV, video and DVD player. Or simply relax on the verandah with a bottle of complimentary champagne and enjoy the wonderful ocean view and charming secluded surrounds.

Facilities & Rating



Luxury heritage cottage accommodation overlooking Ball Bay and Phillip Island

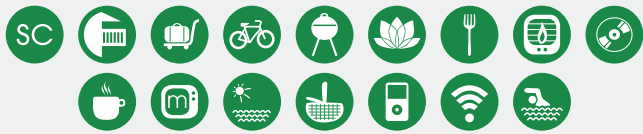
Coast Norfolk Island

COAST lies within the World Heritage KAVHA site, with spectacular views and the perfect combination of location and style. Surrounded by palm trees, lush gardens and the sound of the ocean, it is the perfect getaway. Escape to our onsite Day Spa for heavenly massages and treatments.

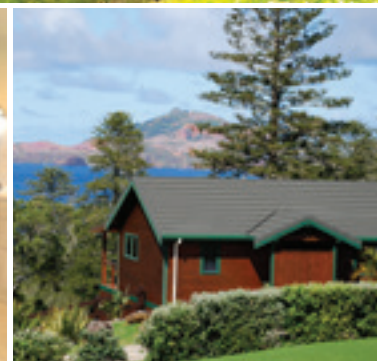
Our unique heritage walk takes you through the 32-acre COAST property, winding through our valley to the convict ruins and the beach. Full kitchens and barbeque facilities allow you to cook up local fresh produce or enjoy a cosy meal by our woodfire in The Boathouse. Explore the Island with our picnic baskets, fishing rods, snorkelling gear and golf clubs, or use our complimentary pushbikes. Relax in the tranquil surrounds by our saltwater swimming pool. COAST is perfectly situated with a five minute drive to the beach or into town, yet is still peaceful and secluded. Owned by locals, we will be able to guide you to the best that Norfolk has to offer.

Top picture is a view at the start of our Heritage Walk and just a 2-minute walk from your accommodation. COAST offers ocean views from all of its boutique accommodation with two houses - Routi House and Rahooolo Cottage, three one bedroom Cottages - Niau Cottage, or the option of fresh one bedroom or two bedroom apartments.

Facilities & Rating



Ocean views, peaceful coastal location, heavenly Day Spa



Cumberland Resort & Spa

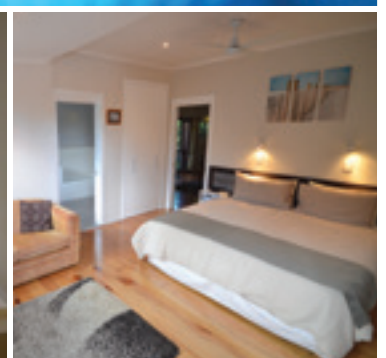
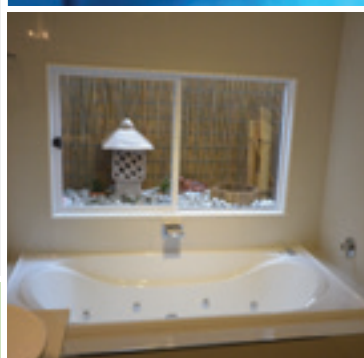
This boutique, self-contained 4-star resort, set in tropical gardens, is located just a short stroll to the shops, cafes, and restaurants, and minutes to the beach & golf. Relax in the heated swim spa pool (36 degrees C) or indulge in a spa treatment or sauna at the onsite day spa. The 10 luxury, ground-floor, 1, 2, 3, 4 and 5-bedroom spa apartments & villas feature en-suite bathrooms to every executive bedroom, with spa baths/massage showers, heavenly King beds, LCD/LED TV, DVD/CD/iPod docks, fully equipped stainless-steel kitchens, dishwashers, heated towel rails, private, sunny spacious verandahs, private BBQ's, picnic sets, snorkel gear, wireless internet, mobile phones. Kickstart your VIP experience with a personal airport welcome, free transfers, free rental car excl. insurance (upgradeable to 8-seater minivan), starter breakfast provisions, free Wi-Fi, Foxtel, SmartTV, 450+ on-demand movies, onsite tour desk, seasonal fruit, and free half-day tour.

For groups, try 4-Bedroom 3 bathroom Cumberland Villa, or 3 and 5 Bedroom Spa Villas (5 spa bathrooms), or treat yourself to The White House, the top property, a massive 5-bedroom, private, presidential hillside retreat with stunning 180 degree Pacific Ocean views, massive outdoor spa, indoor spa, steam & dry saunas, and more...

Facilities & Rating



Boutique Spa Resort offering revitalisation, luxury & personalised service in a central location



Cumberland Resort & Spa - The White House

Located in the prestigious Buck's Point area, this Presidential, 5-King bedroom, 3½ bathroom hillside ocean view spa villa is for your Exclusive Indulgence - no other guests or neighbours. Enjoy absolute luxury and total privacy with breathtaking 180° panoramic ocean views from all rooms & massive wrap-around verandahs. Kickstart your VIP experience with a personal airport welcome & transfer, starter breakfast provisions, free Wi-Fi, Foxtel, Guest Computer, 400+ on demand movies, indoor spa bath, and free half day tour.

Watch the terns gracefully glide below you among the pines or spot migrating whales as you soak in the Jacuzzi/Spa. Detox in the Finnish sauna or relax in the Turkish steam sauna, enjoy spa treatments or yoga on your private Skydeck. Stroll through your private 8-acre rainforest bushwalk, or explore the island in your free 8-seater minivan (or several cars).

upgrade to our presidential package with private tours, massages, and chef. Utilise your friendly managers to arrange anything and tap into their local knowledge. Just minutes from cafes, golf and World Heritage Area.



Facilities & Rating



Where Private Ocean View Luxury meets
Spa & Sauna Indulgence



Daydreamer Apartments



Family adventures start here, at Daydreamer Apartments - Norfolk Island. Offering 1 and 2 bedroom self-contained apartments, open plan kitchen, dining and living rooms, set in a protected landscaped garden area just a few minutes' walk to the centre of town.

Daydreamer Apartments are ideal for families or friends travelling to Norfolk Island together. Head out for the day and come back to a comfortable space to relax and unwind. The accommodation is set on a large property with landscaped gardens and some views across the valley. Local bananas are hung for guests to eat when available & there is a common well-equipped barbeque area.

This is an affordable and comfortable Norfolk Island accommodation property, and families and small groups are most welcome at Daydreamer.

Facilities & Rating



Close to town

Endeavour Lodge



Escape today to Endeavour Lodge and discover our world of peace and tranquility. Located on 7 hectares of land with breathtaking views of bushland the rolling waters of the Pacific Ocean overlook Philip & Nepean Islands.

Endeavour Lodge is your choice for luxurious self catering serviced apartments on Norfolk Island with ocean views from all apartments. From your private, spacious verandah sit back, relax and enjoy the spectacular sunsets and watch an amazingly wide variety of birdlife nesting in the giant Norfolk Island Pines. We are just a pleasant 5 minute drive from the Burnt Pine shopping centre, the World Heritage listed Kingston & Arthur's Vale Historical Area, golf course and beach. Featuring native Norfolk pine timber furnishings throughout. Endeavour Lodge has a range of 1 Bedroom apartments, a 2 Bedroom cottage and a 3 Bedroom House available.

Facilities & Rating



Ocean Views

Crest Apartments



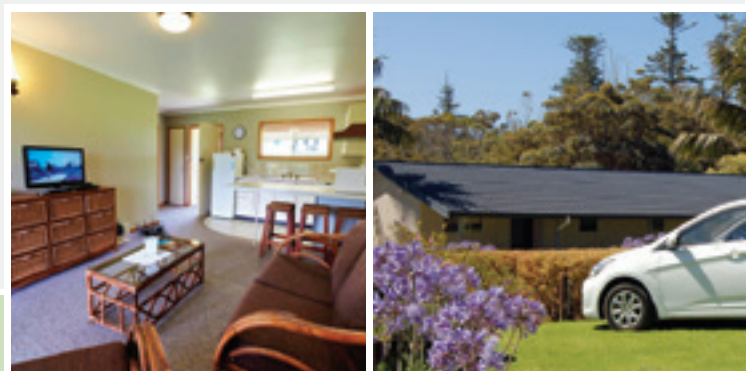
Location! Location! – The Crest Apartments can be your special place to relax, unwind, and retain your independence in a truly relaxed environment. This beautiful property is your gateway to the World Heritage areas of Kingston and Arthur’s Vale, pristine swimming beaches, golf course, Government House, Museums, convict ruins and only a short drive to the Burnt Pine shopping area.

Situated on an elevated 3 hectare site with expansive well-kept grounds with barbecue and garden seating positioned to take advantage of the seascape, it is the perfect spot for outdoor dining and offers great views of the Pacific Ocean and the two nearby offshore islands from the property.

The Crest Apartments offers 14 fully self-contained apartments consisting of 12 x 1 bedroom apartments, 1 x 2 bedroom apartment and 1 x 3 bedroom apartment (interconnecting if required). Each apartment is well equipped including full kitchen facilities and their own private balcony offering uninterrupted views over the tranquil pine-studded valley.

The Crest Apartments are owner-operated (direct descendants of Fletcher Christian) and are suited to couples, families and small groups. The property is the perfect location for a unique Norfolk Island holiday.

Facilities & Rating



The perfect place for outdoor living - relaxing
- barbecues - the choice is yours

Governor's Lodge Resort Hotel



GOVERNOR'S LODGE RESORT HOTEL provides the perfect setting for an unforgettable holiday experience. Each spacious unit is your private oasis separated from the next. Kick back on your deck and breathe in your individual lush surroundings. Stroll through the 12 acres of sub-tropical gardens dotted with majestic Norfolk Pine trees, hibiscus and native shrubs and enjoy the tranquillity that is Governor's. Connect to Wi-Fi, grab a book from the free library, sit back with a cappuccino and a freshly made treat and wait for your tour bus in comfort. We are there to ensure you have the best Norfolk Island experience.

BAILEY'S RESTAURANT is a family home built in the early 1900s that still stands as the centrepiece of what is now Governor's. It has been lovingly restored to showcase its original features whilst incorporating modern comforts to make it a truly iconic restaurant. Take in the period décor while enjoying sumptuous meals prepared with fresh local produce by our talented team. It adjoins our CAFÉ area surrounded by palms, ferns and flowering gardens. The café is light, breezy and colourful creating a fabulous setting for breakfasts and lunches in an all-weather covered alfresco setting.

After a long day of sightseeing, visit our very own HEATED SPA to while away the strains of the day or plunge into the cooling waters of the resort POOL. To really indulge, consider booking a relaxation massage through reception.

All UNITS have a lounge and dining area, kitchenette, private bathroom and separate bedroom with built in wardrobes, huge king bed and plenty of space. For a little extra, consider upgrading to one of our Deluxe units which are larger, have an extra deck at the rear with sweeping valley views, a double spa bath in the bathroom and lots of extra bonus comforts. Governor's Lodge has all you could need for a wonderful break away from the real world. What are you waiting for?

Facilities & Rating



Great location, great facilities, great service

Hibiscus Crown Apartments



These newly renovated apartments are located within Norfolk's CBD. This is a great property for those who want to be close to town yet enjoy the privacy of sub-tropical gardens.

Apartments are self-contained with a fully equipped kitchen including microwave, oven and cooktop. All bedrooms are separate to the living area and beds can be configured as a luxury king or single beds. All linen including beach towels are provided. A picnic set is also provided to enable guests to take advantage of the many scenic free BBQ spots.

All apartments have access to WIFI, a mobile phone can also be provided on request (minimal usage fees apply).

Facilities & Rating 🌴🌴🌴🌴



Recently refurbished, well maintained, close proximity to town. Best managers ever!

Hibiscus Regal Apartments



Hibiscus Regal features 8 one-bedroom apartments with onsite owner/managers centrally located close to town yet within a private sub-tropical garden. Our focus is to provide guests with value for money and comfort. Apartment layout is functional and includes a fully equipped kitchen and adjoining living area, and separate bedroom. All apartments come with their own balcony plus guests are welcome to share the communal BBQ and guest laundry equipped with washing machine and dryer. We haven't forgotten the Norfolk Island must-haves including a full picnic set with each unit to enable guests to take advantage of the many scenic (free) BBQ spots around the island. Beach towels and local pre-paid mobile phone are provided.

Facilities & Rating 🌴🌴🌴



Located close to town yet within a private sub-tropical garden

Highlands Norfolk Island



Looking for a large house to share with up to 13 guests? After 4 years of extensive renovations, the fondly remembered Highlands is finally back in business!

Book out the whole property as 6 bedroom + 6 1/2 bathroom lodge (option to book 4 rooms). Cook & spend time together, whilst enjoying the privacy of spacious ensuite bedrooms.

Private swimming pool, large function room/studio space and massage room included. Perfect for adult family reunions, small retreats or work groups. Nestled at the foot of the National Park, we are surrounded by tranquil subtropical bushland brimming with bird life, including the endangered green parrot.

Facilities & Rating 🌴🌴🌴🌴



6 bedroom 6 bathroom lodge with private pool, near the National Park

Islander Lodge Apartments



Islander Lodge offers unsurpassed views of the most picturesque scenery on Norfolk Island. Nestled against the landscape of sloping hills, this Norfolk Island accommodation property has full frontal ocean views, and a panoramic outlook of the entirety of Norfolk Island's World Heritage Listed Kingston and Arthur's Vale Historic Area.

Islander Lodge is a comfortable and affordable accommodation option, offering five self-catering one-bedroom apartments, with open-plan living and dining areas and modern décor. All apartments have unsurpassed ocean views from the front deck looking out to Phillip and Nepean Islands, where you can watch the sun as it sets over the Island.

Facilities & Rating 🌴🌴🌴🌴



Unsurpassed ocean views

Jacaranda Park Holiday Cottages

From the minute you drive in the gate, you'll be so pleased that you chose Jacaranda Park Holiday Cottages for your stay on beautiful Norfolk Island. Surrounded by glorious gardens full of flowers and native plants, our 4 star country style award winning cottages offer all you could want for a relaxing and comfortable holiday. To compliment your stay, a hire car with insurance is included.

The five cottages are owned and operated by locals Bookie and Vanessa who live on site. They have a wealth of information and suggestions to offer all guests to make your holiday a memorable one.

Guests will appreciate the privacy and comfort of the cottages which have been designed to take full advantage of the location. Nestled on the ridge of a valley, each cottage has a king sized bedroom with open plan lounge and dining area. A large sunny and private verandah, accessible from both lounge and bedroom, provides spectacular views through valleys to the distant sea. Each cottage also features a full sized self contained kitchen and laundry. A feature in each cottage is the two person spa... a great way to relax at the end of the day!

Comforts such as picnic basket, hairdryer, mobile phone, umbrella and beach towels are all standard. Our beautifully crafted cottages offer the perfect couples retreat or are great for small groups of friends or family.

Facilities & Rating



Adults only luxury cottages in a peaceful island paradise



Kentia Holiday Apartments

Kentia is Norfolk's best kept secret. Situated on almost 3 acres of hillside these large, spacious and secluded cottages and villas all feature stunning ocean views across Cemetery Bay to Phillip Island.

They are privately spaced amongst our delightful gardens to give our guests seclusion and guaranteed tranquillity – a perfect setting for your Norfolk Island holiday!

Our unique 2,3 & 4 bedroom cottages and villas each have two bathrooms with hair dryers, own laundry, a fully equipped kitchen with all cooking and dining facilities including your own barbecue and private deck to sit and enjoy ocean views, sunsets and White and Noddy Terns soaring about.

With picnic baskets, thermos flasks and beach towels all supplied and your free hire car with insurance you are ready to explore this wonderful island at your own pace.

Also included are starter packs of toiletries, tea, coffee milk and sugar and Wi-Fi and mobile phone.

This enables Kentia to offer ideal accommodation for couples, families and friends travelling together.

Facilities & Rating



Fully self-contained cottages and villas with stunning ocean views.



Norfolk Holiday Apartments



Norfolk Holiday Apartments will impress you. There is space to spare in these peaceful, spacious, self-contained apartments.

Down a quiet private lane, you will be 5 minutes drive from cafes, tour companies, and the shops.

All apartments are designed for maximum convenience with pleasant décor, well equipped kitchens, and all bedrooms have an en-suite bathroom.

You will have your own patio to sit out on, hear the birds and watch the famous Norfolk Island sunset over the tranquil valley. Sub-tropical gardens, large lawn areas, and a covered BBQ area also welcome our guests.

Facilities & Rating 🌴🌴🌴🌴



Spacious apartments in a tranquil setting and still close to town

Ocean Breeze Cottages



Take a deep breath of fresh Norfolk Island ocean air from the deck of your cottage when you book and stay at Ocean Breeze for your next Norfolk Island holiday.

Offering 12 x stand-alone 1 bedroom, self-contained cottages with modern kitchens, en-suite bathrooms, separate bedrooms and open plan living areas all with outstanding ocean views.

The property boasts stunning landscape gardens, a tennis court and a large central building suitable for a small conference or family event. Modern, comfortable, close to town and fully equipped for groups, families, couples or singles, we invite you to choose Ocean Breeze as your affordable luxury Norfolk Island accommodation today.

Facilities & Rating 🌴🌴🌴🌴



Ocean views

Paradise Hotel & Resort



The award winning Paradise Hotel & Resort is one of Norfolk Island's most popular hotels boasting 50 spacious guest rooms in 4 accommodation styles. Set on 11 acres of beautifully landscaped gardens we are located right next door to Cyclorama, Pitcairn Settlers Village and only a short leisurely stroll from the town centre. Paradise provides guests with a range of facilities and services including a complimentary daily shuttle to town, swimming pool, BBQ area and excellent dining facilities in our onsite restaurant "The Garden Restaurant and Bar".

Facilities & Rating 🌴🌴🌴🌴



Escape to Paradise... quality service & friendly staff

Seaview Norfolk Island



Seaview Norfolk Island is the perfect location to enjoy all Norfolk Island has to offer. Our boutique accommodation boasts stunning ocean and valley views to relax guests into the islands rhythm, in a central location just a flat 5 minute walk from the town centre. Seaview is also just a 2 minute drive to the historic Kingston area with convict buildings, museums, the golf club, Emily Bay and more.

Great for couples, families, and small groups, the property offers a choice of 1 or 2 Bedroom Self-Contained Cottages and 1 Bedroom Apartments, or economy motel rooms with access to a shared kitchen. Locally owned and operated, Seaview Norfolk Island extends guests an authentic branch of island hospitality.

Facilities & Rating 🌴🌴🌴🌴



Stunning ocean views central to the shopping centre

South Pacific Resort Hotel



Set in 5 acres of beautiful landscaped gardens the newly renovated South Pacific Resort is the largest and most conveniently located hotel on Norfolk Island. Within walking distance of main shopping township of Burnt Pine and only a short drive to historical Kingston, beautiful Emily Bay and the golf course, the South Pacific Resort is the perfect place to relax and unwind on your Norfolk Island holiday.

Enjoy a delicious dinner in Cooks' Landing Restaurant which offers both Australian and Asian cuisine for all age groups, sample the fantastic coffee and lunch at the Aviation Poolside Coffee Shop or sip a cocktail by the pool at the end of a busy day. Whatever your preference, our warm and friendly staff will ensure your Norfolk Island holiday is a memorable one.

Accommodation is provided in 70 spacious Garden, Superior, Deluxe, Penthouse rooms, Eveleen suite or Service Apartments, all with garden, valley or partial ocean views. The rooms offer modern conveniences and facilities and some have disabled facilities.

Hotel facilities are extensive and include Wi-Fi, swimming pool, hot tub, coffee shop, bar, restaurant, conference facilities, games room and a free scheduled shuttle bus to Burnt Pine shops and restaurants for those who prefer not to walk. As a bonus continental breakfast is included. Car hire is available at hotel. The hotel welcomes couples and families of all ages and can provide extensive conference and meeting facilities if required. We look forward to welcoming you to the delightful South Pacific Resort, Norfolk Island's best located full service resort.

Facilities & Rating



The island's biggest hotel and within walking distance of the township.

Tintoela of Norfolk

Tintoela is Norfolk Island's original boutique luxury retreat. The island-style homestead and two cottages, situated on 4 acres of tropical gardens, offer world-class design, craftsmanship and storybook ocean views.

Meaning "sweetheart" in the Norfolk language, Tintoela is situated in a serene valley with breath taking ocean views. Each accommodation has been hand crafted, with the utmost attention to creating a space of wonder and relaxation. All three holiday homes are fully contained, including full laundry facilities, and come with a complimentary hire car. It's just a three-minute drive from the centre of town, beaches and national parks.

Our three luxury holiday homes showcase the best of Norfolk Island architecture, blended with the subtle elegance of sophisticated living.

Hunky's Homestead - Norfolk's largest accommodation, 6 bedrooms over three levels, 3 1/2 bathrooms, catering up to 14 guests

Hilli Cottage - bright and spacious 2 bedrooms, 2 bathrooms, ideal for up to 6 guests.

Kushu Cottage - enchanting 1 bedroom, suitable for 2 guests.

Tintoela is the perfect holiday destination for couples, families, groups of friends, family reunions and weddings



Facilities & Rating



Tintoela offers world-class design, craftsmanship and storybook ocean views.

Tudor Apartments



Tudor Apartments is a smaller property located at the southern end of Burnt Pine offering peace and privacy yet still within walking distance of the shops, restaurants and cafes.

There are just 5 units in the complex comprised of one and two bedroom self-catering apartments and for those seeking more space, a three bedroom unit is also available. Tudor is an ideal choice for those looking for an easy, laid-back holiday at an affordable price.

All Tudor guests have access to the facilities at Aloha Apartments and please note that guests are required to visit the main reception at Aloha Apartments to check-in.

Facilities & Rating



Great value and great location close to the town centre

Whispering Pines Cottages



Nestled close to the edge of the Norfolk Island National Park, Whispering Pines Cottages sit around the ridge line overlooking the stunning slopes and valleys covered in iconic Norfolk Island pine. Just out of town, but quiet enough that you find yourself getting lost in the view of the stunning natural scenery.

These cottages make the ideal setting for small families or groups of friends, offering close proximity but still allowing for personal space. All cottages are fully self-contained with modern and spacious kitchens with open plan living and dining rooms. Sit on the front veranda, enjoy a BBQ and watch the sun go down over the mountain.

Facilities & Rating



Lose yourself in the view

EXOTIC SOUTH PACIFIC

Omniche Holidays - Exotic South Pacific. Expertly Packaged

2020



Cook Islands



Vanuatu



Lord Howe Island



Fiji



Solomon Islands



Samoa



Niue



Norfolk Island



Tahiti



Tonga



New Caledonia



Exotic South Pacific. Expertly packaged.

Travel Agent:

Head Office:

Level 1/ 345 Ann Street, Brisbane, Qld 4000

Free Call: 1800 111 653

Phone: 07 3221 3381 Fax: 07 3221 7899 Email: res@omnicheholidays.com

www.omnicheholidays.com

IATA No. 02-359486