

ISLANDS *of* TAHITI

Omniche Holidays - Exotic South Pacific. Expertly Packaged



OMNICHE
HOLIDAYS

Exotic South Pacific. Expertly Packaged.

It's time to explore Tahiti



Enjoy full service in all classes

* Complimentary WiFi for Poerava Business



AIR TAHITI NUI

AUCKLAND - TAHITI - LOS ANGELES - SEATTLE - PARIS - TOKYO

WELCOME

© Tahiti Tourisme - Grégoire Le Bacon

Experience The Islands of Tahiti and the South Pacific with Omniche Holidays...

As a boutique wholesaler committed to providing first rate customer service, Omniche Holidays offers holiday packages to the South Pacific including the Islands of Tahiti. Within this destination the following is offered: Independent Travel Packages, Special Interest Travel, Cruising and Wedding Packages. Omniche Holidays is committed to supporting its industry partners by exceeding expectations in service and innovation.

The travel specialists at Omniche Holidays frequently visit the South Pacific so the most up-to-date advice and information can be provided. You can be assured you will be talking to a consultant who knows the destination well.

The name, 'Omniche', is pronounced 'om - niche'. The company name represents our promise and mission. The 'om' means to know all about a destination, the 'niche' represents our focus on specialised and boutique regions of the world. And the 'ni' in the middle signifies the company's roots of Norfolk Island.

Omniche Holidays is committed to supporting its industry partners by exceeding expectations in service and innovation



OMNICHE
HOLIDAYS

Exotic South Pacific. Expertly Packaged.



© Tahiti Tourisme - Héloïse Howard

ISLANDS of TAHITI

Tahiti. The name conjures up exotic images of crystal-clear lagoons, sparkling white-sand beaches, and stunning overwater bungalows, swaying palms, dramatic mountain peaks and beachside cocktails. A vision of pure South Pacific paradise, blending luxury and relaxation with natural beauty.

The reality lives up to the dream, and more. The Islands of Tahiti, also known as French Polynesia, span an area half the size of Australia and consist of 118 sun-soaked islands, grouped into five archipelagos with their own distinctive character, spellbinding landscapes, welcoming climate and charm. A nine-hour flight from our east coast yet a world away in spirit, the Islands of Tahiti effortlessly blend Polynesian and French influences to create a holiday experience you will never forget.

Indulge in the views of volcano peaks towering over turquoise lagoons. Savour the tastes of fresh seafood and exotic fruits. Inhale the scent of fragrant tropical flowers, breathe in the pure relaxation at a beachside spa and end the day savouring a private candlelit dinner, lagoon-side or on your own overwater deck, under a starlit sky throwing reflections over calm lagoon waters.

Rise and shine in ultimate style as a fresh tropical breakfast is delivered to your bungalow by traditional canoe. Escape to your own piece of paradise for a picnic on a Tahitian motu or explore by taking to the skies, waters or valleys on luxury tours by helicopter, boat or 4WD safari. Stroll lush forests to discover magnificent waterfalls and healing springs; snorkel amongst colourful fish and marine life, and experience in every moment of every day the Polynesian "mana": a spiritual way of being framing a genuine love of life.

Delight in the local culture, history, music, dance and crafts, capped by the genuine friendliness of the people which is as warm as the sun itself. Whether you are on an anniversary, honeymoon, romantic getaway or simply seeking to experience the unique and renowned natural beauty, the Islands of Tahiti are a vast paradise waiting to be enjoyed.

Throughout the islands, time slows as you succumb to the rhythm of the sea, gentle lap of lagoons and wonder of unspoilt nature.

The Islands of Tahiti are waiting for you...

“The islands of Tahiti are a vast paradise waiting to be enjoyed”



© Tahiti Tourisme - Lei Tao



© Tahiti Tourisme - Grégoire Le Bacon



© Tahiti Tourisme - Grégoire Le Bacon



© Tahiti Tourisme - Lei Tao

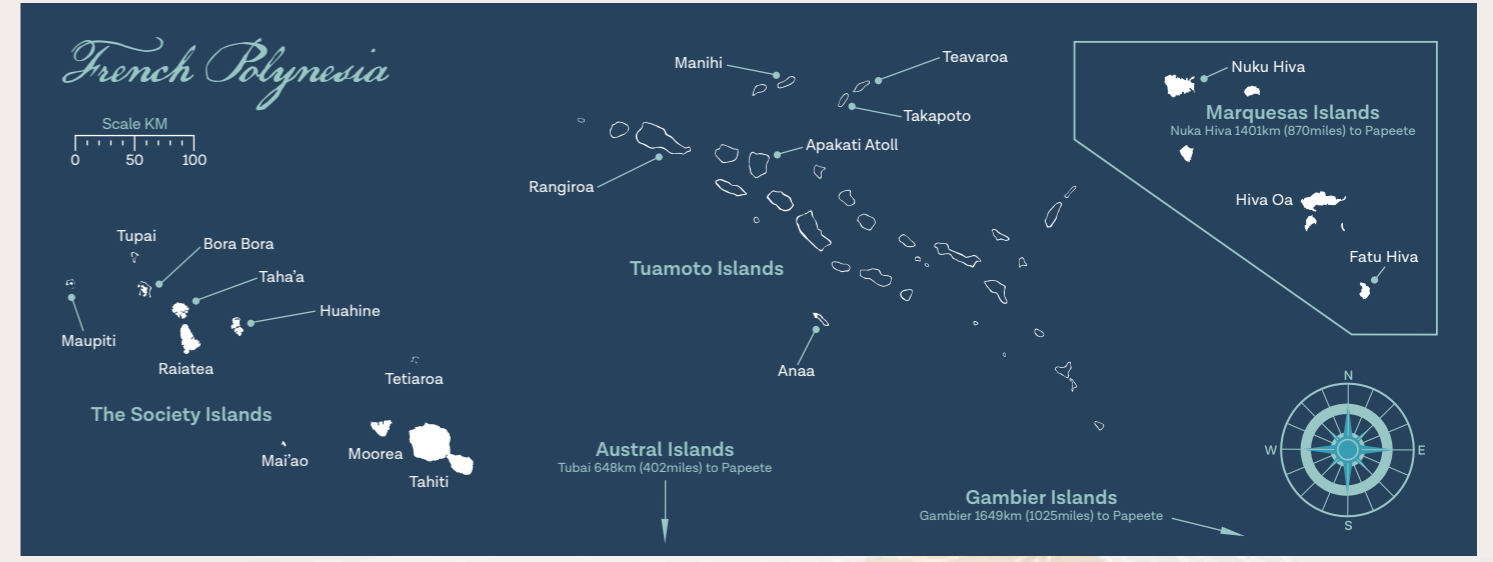
© Tahiti Tourisme - Hino Itaru



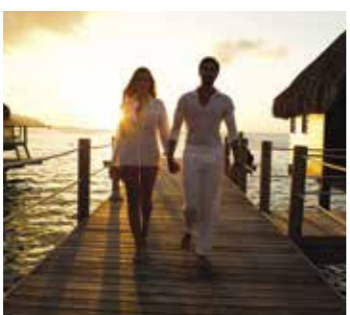
© Tahiti Tourisme - David Kirkland



© Tahiti Tourisme - Myles McGuinness



© Tahiti Tourisme - Myles McGuinness



© Tahiti Tourisme - Grégoire Le Bacon



© Tahiti Tourisme - Grégoire Le Bacon



© Tahiti Tourisme - Myles McGuinness



© Tahiti Tourisme - Dimitri H...



© Tahiti Tourisme - Jeremy Austin



© Tahiti Tourisme - Grégoire Le Bacon

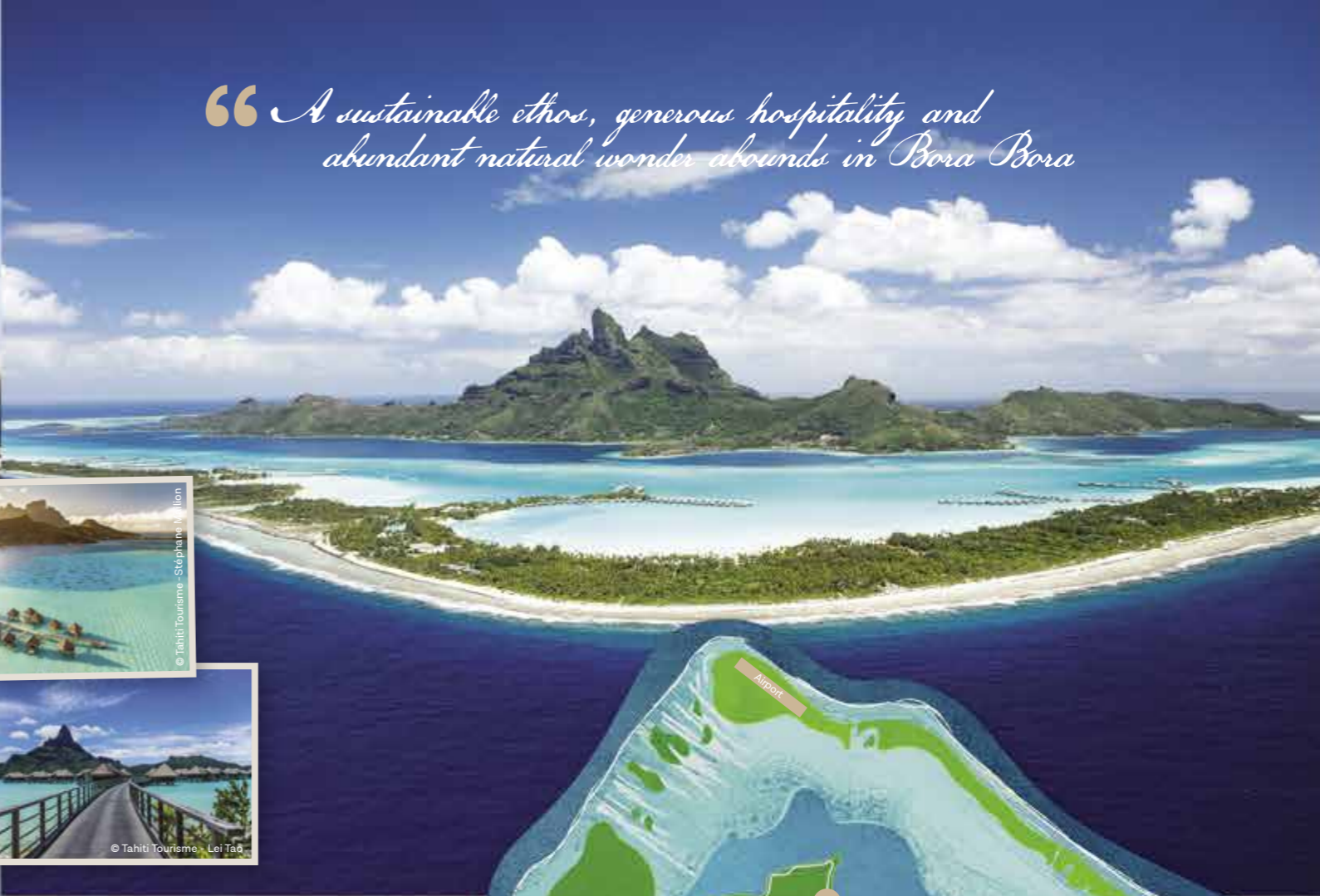
Contents

Bora Bora	04
Tahiti	10
Moorea	18
Other Islands of Tahiti	23
Cruising	27
Air Tahiti Nui	28
Weddings	29
Terms and Conditions	30



ISLANDS OF TAHITI
BORA BORA

“A sustainable ethos, generous hospitality and abundant natural wonder abounds in Bora Bora”



The shimmering jewel in the Tahitian crown. Lose yourself in the intoxicating allure of legendary Bora Bora, renowned as one of the world's most romantic destinations. A short 50-minute flight from Tahiti and vibrant blues, sparkling whites, deep-orange sunsets await ... revel in breathtaking views of the iconic lagoon day-round from the private deck of your overwater bungalow, a distinctive Tahitian feature with thatched-roof and unmatched calm ambience. There is no better place to unwind, indulge, connect and relax, your views framed by the towering peak of Mount Otemanu. Dive off the deck into the tranquil lagoon water and experience mystique and exhilaration that mere words cannot fully capture.

Escape to your own private motu for a romantic lunch showcasing the stunning local produce, or splash out in style with a deluxe VIP day tour or high-end lagoon cruise. Stroll the warm white sand beaches and savour a champagne or cocktail beside gently lapping water as you lose yourself in the sunset.

Luxuriate in a day spa and treat your taste buds to exquisite dining from just about every cuisine you could savour. The famed beauty is everywhere in beautiful Bora Bora, whether you are exploring the lush interior on 4WD safari tour or diving beneath the surface of the picture-postcard lagoon to marvel at the tropical fish and beautiful coral gardens.

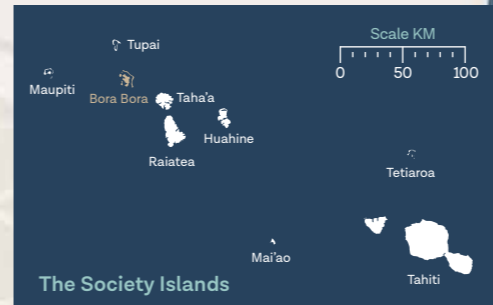
A sustainable ethos, generous hospitality and abundant natural wonder abounds in Bora Bora, where you can experience the remarkable depth of sacred heritage at a marae or the colourful customs and heritage at Vaitape craft centre. The alluring sights and smells will sweep you up from dazzling sunrise to warm sunset at Matira Beach, with the island's dazzling white, turquoise and blue tapestry framed by the golden shades of dusk.

ACCOMMODATION

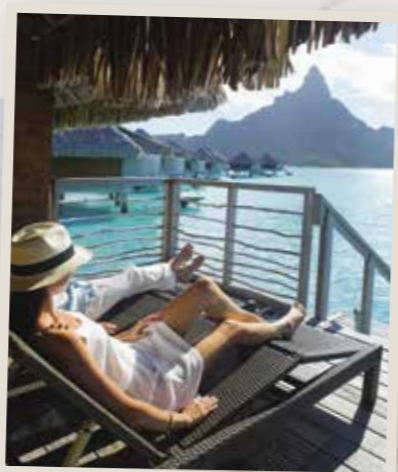
- 01. Conrad Bora Bora Nui
- 02. InterContinental Bora Bora Le Moana Resort
- 03. InterContinental Bora Bora Resort & Thalasso Spa
- 04. Le Bora Bora by Pearl Resorts
- 05. Maitai Polynesia Bora Bora
- 06. St Regis Bora Bora
- 07. Four Seasons Bora Bora

POINTS OF INTEREST

- 08. Mt. Otemanu
- 09. Naval Museum Bora Bora
- 10. Restaurant St. James



BORA BORA 16°30'S 151°44'W
 Area: 34 km2 (11 sq mi)
 Highest Point: Mount Otemanu - 727 m (2385 ft)
 Flight to Tahiti: 50mins



Bora Bora Tours

AUTHENTIC SHARK & RAY LAGOON SAFARI

Travel by small boat with your guides, the Tepeva family to explore the underwater world of Bora Bora. You will be taken away from the bustle of the famous touristic spots to preserved sites full of underwater wonder. As you stand in the shallow lagoon water you will experience colourful tropical fish darting through the water, stingrays nuzzling up close and the Black Tip Reef Sharks gliding by for a closer look. Take a snorkel to marvel at the clams, spot camouflaged octopus and admire the coral gardens and different fish species as you drift along the crystal clear waters of the lagoon.

Before this full day tour ends, travel onto the mythical Motu Tapu, a very small private island in Bora Bora's lagoon and former residence of the queen. This idyllic piece of paradise used to be prohibited to any person outside the court, hence its name of "tapu" meaning banned in Tahitian. A BBQ lunch is included.



BORA BORA STAR GAZING

Set sail for an evening of stargazing and storytelling. Savour a glass of bubbly while enjoying colours of red, orange and yellow take over the pristine blue skies of the day. Before you know it the Tahitian night sky will unravel before you. Your star-guide will tell old stories and legends of the Tahitian people, explaining how they decoded the night sky to help them explore the Pacific, long before western sailors.



VAVAU 4WD SAFARI

Explore the beauty and World War II history of Bora Bora on this half day 4WD tour. Travel to many of the island's vantage points and admire the dormant volcano at the heart of the island and the sandy beaches that edge the motus, and the lagoon beyond. During WWII, the island became a military base for US Forces. The remains of infrastructure and defence fortifications are stopping points on your tour.



JET SKI & SNORKELLING COMBO

Combine sport and discovery starting with a 2 hour Jet Ski guided tour, visiting picturesque bays with Mt Otemanu as your backdrop. Stop for lunch at Bloody Mary's restaurant before continuing with a Shark & Ray Snorkelling Safari to discover the lagoon and its underwater fauna. See reef sharks, stingrays and tropical fish, and learn how Polynesian culture and marine life go hand in hand.



VITAMIN SEA SUNSET CRUISE

Embark on Vitamin Sea, a converted racing catamaran, and set sail for the best way to end an incredible day in paradise - a sunset cruise on Bora Bora's stunning lagoon. Capable of sailing in the shallow waters and taking you to where larger boats are unable to, you are able to visit the more secluded and beautiful spots in the lagoon and have the most amazing sunset views.



DINNER AT ST JAMES RESTAURANT

Considered the place to eat and drink in Bora Bora, St James Restaurant offers a culinary delight with its fusion of French gastronomy and Polynesian flavours. With its idyllic setting overlooking Bora Bora lagoon, you can savour dinner while taking in breathtaking views. The restaurant also features a cellar with the best vintages that pair perfectly with the delicious dishes.



BORA BORA ISLAND BY ATV

Take a tour with a difference, an ATV-Quad tour of the island of Bora Bora. Go off the beaten track to breathtaking viewpoints, historic sites and other must-see places on the island including WWII remains and Matira beach. History, legends, culture and geology, you will learn everything about Bora Bora and its population from your guide all while having an adventure.



InterContinental Bora Bora Resort & Thalasso Spa



"Spectacular views, luxury overwater villas, lush tropical gardens and a wide range of water sports and activities"



Motu Piti Aau – the 'islet of two hearts' – rises up out of the turquoise waters that surround the main island of Bora Bora. Bright blue lagoon on one side, sapphire South Pacific on the other, this slender strip of land is home to French Polynesia's most exclusive InterContinental Resort.

Facing the main island of Bora Bora and the majestic Mount Otemanu, the InterContinental Bora Bora Resort & Thalasso Spa is perfectly placed to provide guests the best of Bora Bora: spectacular views, luxury overwater villas, lush tropical gardens and a wide range of water sports and activities.

Barbecue buffets, fine French dining, full American breakfasts and fresh tropical fruits – your stay at the InterContinental Bora Bora Resort & Thalasso Spa will take you on a culinary journey across continents. The resort offers international cuisine and authentic local dishes in an array of casually elegant restaurants and bars, each with

their own unique ambience and style. Theme dinners are a highlight, showcasing traditional Polynesian culture through food, song and dance.

Driven by a deep commitment to help protect the planet, and inspired by the power of the oceans, the resort pioneered the world's first private Sea Water Air Conditioning (SWAC), a sustainable technology using cold deep-sea salt water to cool the resort. The Deep Ocean Spa is the French Polynesia's first thalasso spa, integrating deep-sea water nutrients into healing treatments based on ancient Polynesian traditions. Thanks to glass-bottom cabins, having a relaxing massage comes with a view of colorful fish swimming beneath you.

Whether you are seeking adventure, relaxation, romance, or all three within an exclusive Bora Bora luxury resort, InterContinental Bora Bora Resort & Thalasso Spa will inspire you with a front row seat to one of the most spectacular places on earth.

Largest wine collection; best Mount Otemanu views; unique thalasso therapy spa.



“Stylish overwater bungalows stretch out over the lagoon, with the peaks of Otemanu and Pahia rising up in the distance”



Experience Bora Bora – the Pearl of the Pacific – from the InterContinental Bora Bora Le Moana Resort located on the famous Matira Point. The pride of French Polynesia, Bora Bora is a tropical paradise with pristine turquoise waters and lush volcanic peaks, a tranquil lagoon oasis protected by a spectacular coral reef.

This intimate, convivial luxury 4-star resort is located on the southernmost point of Bora Bora, close to one of the most beautiful beaches in the world. While beach bungalows are perched along the shoreline between coconut palms, stylish overwater bungalows stretch out over the lagoon, with the peaks of Otemanu and Pahia rising up in

the distance – the perfect romantic destination for honeymooners and couples seeking an exotic getaway.

At the InterContinental Bora Bora Le Moana Resort you can enjoy French-inspired cuisine at the main restaurant, Noa Noa, as well as a bi-weekly theme dinner and an expansive international buffet. The Vini Vini Bar and Terrace Restaurant is the ideal spot to meet and relax with drinks, exotic cocktails or light snacks.

In the calm embrace of nature, immersed in the relaxed Polynesian way of life, let the InterContinental Bora Bora Le Moana Resort give you the tropical holiday of a lifetime.

Main island with convenience to town; robust biodiversity; incredible staff.



Nestled between the soaring backdrop of Mount Otemanu and the mesmerising lagoon, Conrad Bora Bora Nui is a blissful and luxurious resort where relaxation and unparalleled views await you. Feel relieved while enjoying Hina Spa’s unique scenery, overlooking both iconic Mount Otemanu and Maupiti Island. Add unexpected excitement to your trip with a romantic getaway on Conrad’s private islet Motu Tapu or enjoy the golf and sport simulator to create unforgettable moments with your friends or family. Experience luxury with Conrad’s Island host butler service available in all villas and suites and floating helipad for exclusive arrivals, departures and tours. Live a unique inspiring experience with our free daily cultural activities. Contribute to positive social and environmental efforts through an ecotourism approach with Conrad’s exclusive partnership with Manta Trust foundation and leave your footprint in Bora Bora by planting your own baby coral. Discover the beauty of this little paradise for a once-in-a-lifetime adventure and allow Conrad Bora Bora to create your own truly memorable experience.

Le Bora Bora by Pearl Resorts

Unique location facing Otemanu mountain



Poised on Motu Tevairoa, only a ten-minute boat ride from the airport and fifteen minutes across the lagoon from the village of Vaitape, Le Bora Bora by Pearl Resorts combines heavenly location and proximity to the mainland. The resort boasts authentic Polynesian style and architecture and certainly offers some of the most traditionally designed rooms and villas in Bora Bora. While overwater bungalows are Bora Bora’s iconic accommodation type, the resort also features spacious Garden and Beach Villas with Pool. The 108 bungalows and villas are nestled in a beautiful tropical garden, on the beach and of course above the turquoise lagoon.





ISLANDS OF
TAHITI

“ Experience the genuine warmth and hospitality of proud, welcoming locals as they share with you their special piece of paradise ”



Scale KM
0 50 100

Tupai
Maupiti Bora Bora Taha'a Huahine Raiatea Tetiaroa
Ma'ao Tahiti

The Society Islands

TAHITI 17°42' S, 149°33' W

Area: 1,044 km2 (403 sq mi)
Highest Point: Mount Orohena - 2,241 m (7,352 ft)
Flight Time to Auckland: 5hrs 40mins

Arrive in the capital of French Polynesia and find yourself immediately immersed in the tropical wonders and magical mystique of French Polynesia. Papeete is the heartbeat of the largest, liveliest and most renowned island of Tahiti: a pure natural paradise with its lush tropical forests, stunning flora and fauna, majestic cascading waterfalls and secluded bays.

Exhilarate in the diverse activities and sights of the bustling capital, with its rich tapestry of markets, enticing food stalls, galleries, colourful dance shows, craft exhibits and street art. Start the day watching the port come to life and end the day with a sunset cocktail or champagne before a starlit private waterside dinner.

Savour fresh seafood and a vast array of exotic cuisines as you dine in style at high-end resorts; take home a magical memento from the

renowned black pearl shops and upmarket boutiques and luxuriate in the tropical tranquillity of a day spa. Experience the genuine warmth and hospitality of proud, welcoming locals as they share with you their special piece of paradise.

Venture inland to find Tahiti is far more than just picture-postcard lagoons, sparkling beaches and dramatic mountain backdrops. Experience an inland oasis of unspoilt natural beauty. At the Mara'a caves, dive into refreshing deep-blue water framed by abundant lush flora. Be soothed by the healing properties of the pure Vaima Spring water; stroll the landscaped gardens besides stunning cascades at Vaipahi Gardens; breathe in the sacred serenity and spirit of the Arahurahu marae. Indulge, escape, experience... Papeete embraces and uplifts you with its pure Polynesian wonder.

ACCOMMODATION

- 01. Hilton Hotel Tahiti
- 02. InterContinental Tahiti Resort & Spa
- 03. Le Tahiti by Pearl Resorts
- 04. Te Moana Tahiti Resort
- 05. Vanira Lodge

POINTS OF INTEREST

- 06. Papeete
- 07. Point Venus
- 08. Mount Orohena
- 09. Fautaua Falls Valley
- 10. Teahupoo
- 11. Faarumai Waterfall



© Tahiti Tourisme - Myles McGuinness

© Tahiti Tourisme - Myles McGuinness

© Tahiti Tourisme

© Tahiti Tourisme - Tony McKenna
© Tahiti Tourisme - Myles McGuinness

All photos on spread © Tahiti Tourisme - Grégoire Le Bacon unless stated otherwise

DISCOVERY OF AUTHENTIC TAHITI

The Island of Tahiti has much to offer and this full day tour allows you to experience the best of both the East Coast and the West Coast. The East Coast is rich in history and is well known for its black sand beaches and the local crafts people. Hit the road to explore some of the less populated regions including Matavai Bay where explorers Samuel Wallis and James Cook landed in the 18th century. Meet local Tahitians and see their artistic talent through the fine sculptures and engraving artwork on display at Centre Des Metiers D'Art. The West Coast has much natural beauty and offers numerous archaeological sites. On this part of the tour learn about Tahitian traditions and culture when you visit Marae Arahuru home to one of the best-preserved tiki statues in Tahiti. Explore the open space and monuments of these ancient and sacred meeting grounds before continuing on to visit a natural spring thought to have healing qualities and savour some local Polynesian produce.



SAILING OUTRIGGER CANOE DISCOVERY TOUR

Ancient Polynesians undertook their great exploratory migrations aboard beautiful, big outrigger canoes (called Va'a), following the stars and paying attention to both wind and swell. Set sail in an outrigger canoe and discover Tahiti from the ocean, get to know its history, its legends and myths and learn how to navigate during an unforgettable nautical excursion.



DISCOVER TEAHUPOO

Head to the peninsula of Tahiti, a real world apart from the hustle of Papeete. This volcanic peninsula is filled with an immense variety of plants and trees. Its fantastic colours and landscapes will amaze you. Its lush vegetation and crystal clear water will refresh you. Enjoy several swimming and discovery stops, and if you time your visit right, be impressed by the "Teahupoo wave" where the surfing competition takes place.



HELICOPTER SCENIC FLIGHT

Take off from Tahiti Faa'a airport towards the legendary Fautau Valley and the Fautau River that flows through it. Discover the steep and vertiginous walls of this luxuriant valley. Take a closer look at the Tiara Pass and its 1050m altitude. You will end your flight by flying over the port of Papeete. The flight may only be ten minutes in duration but it will feel like a lifetime as you gaze in wonder at this lush tropical view.



PRIVATE SURF COURSE WITH MICHEL DEMONT

Michel Demont - 6x European Champion, South Pacific Champion '07, Champion Tahiti '09 & Coach for the Tahitian Juniors (16-18 yrs) - is your private tutor on this tour. Take on board tips from the pro and feedback to improve your skills. Choose various surf spots and different wave types depending on your ability and try out different boards. By the end of the course your surfing skills should be next level.



HIKING IN THE LAVA TUBES

Enjoy this 'Canyoning' hike visiting lava channels that were formed during the volcanic period when the island of Tahiti was born. Explore the rocks and vaults that Mother Nature herself has carved out with your experienced guide. Head through the lava tubes as they twist and turn through the earth. When you reach the surface once more, follow the river bubbling with waterfalls to its end for a swim in the cool water and a replenishing lunch.



SNORKELLING GUIDED TOUR

Discover the richness of the waters of the Island of Tahiti thanks to this very comprehensive snorkelling guided tour that combines both the waters of the ocean and the lagoon. Swim alongside turtles, reef and lagoon fish, and take in the vibrant colours of the corals. Swim over Cessna airplane and schooner wrecks to see the hidden wonders in their remains. This experience will leave you wanting to see more of Tahiti's underwater beauty.

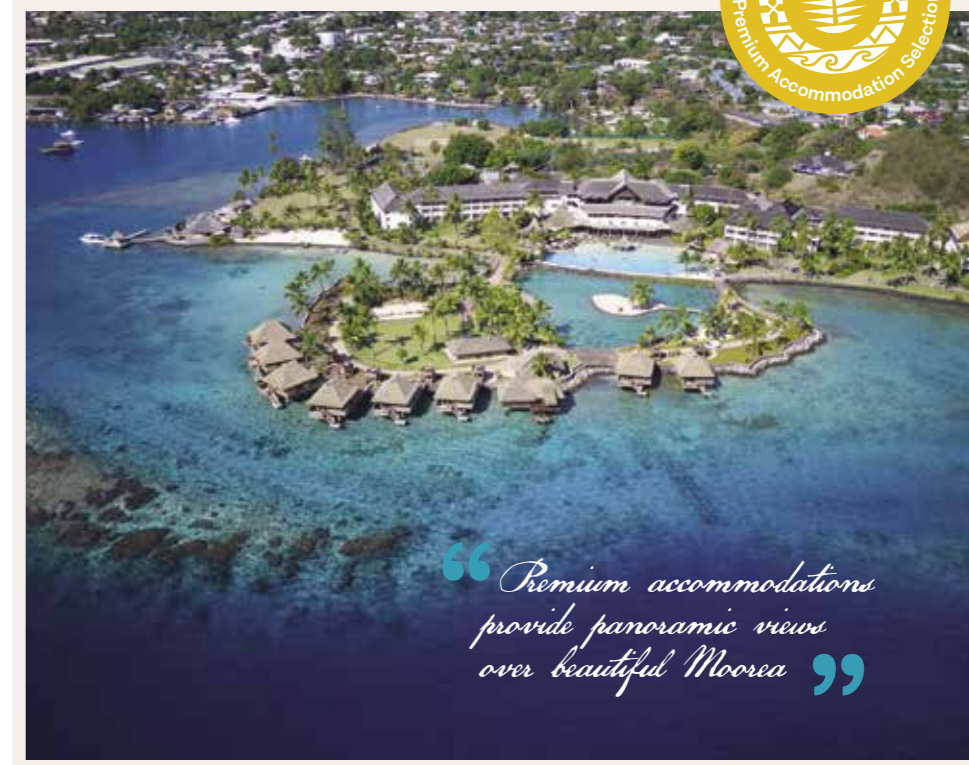


A lavish garden setting, a gorgeous turquoise lagoon, volcanic peaks rising up in the distance - the InterContinental Tahiti Resort & Spa is the perfect launch-point for your French Polynesian vacation.

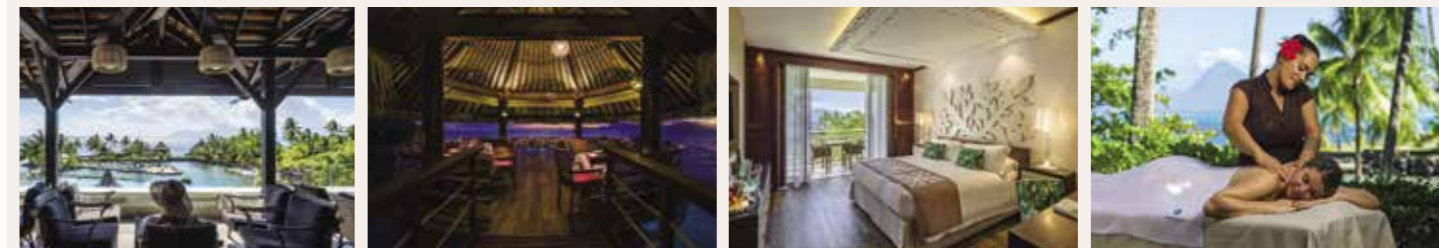
Located on the main island, only two kilometres from the airport and city shopping, this is your first stop in French Polynesia, welcoming you into a lush 25-hectare tropical garden, surrounded by clear, cerulean seas. With overwater bungalows, lagoon-view and garden-view rooms, the premium accommodations provide panoramic views over beautiful Moorea, showcasing the sparkling ocean and the volcanic mountains of the sister island.

This 4-star resort and spa boasts two superb infinity pools set amid colourful indigenous plants and towering palms. It offers a diverse range of activities and top-notch facilities, with locally renowned restaurants and vibrant tropical bars, each offering their own unique ambiance. Relax in the Lobby Bar with a premium drink, enjoy an intimate gourmet dinner at Le Lotus overwater restaurant, or kick up your heels with signature cocktails at Tiki Bar.

With a luxury spa, lush overwater bungalows, tropical gardens and a wide range of water sports, the InterContinental Tahiti Resort & Spa is the quintessential island escape, with everything you need for a true French Polynesian getaway.



“Premium accommodations provide panoramic views over beautiful Moorea”



Overwater bungalows, lush grounds, strong Polynesian energy, easy airport access

Le Tahiti by Pearl Resorts

All rooms are facing the ocean



Located on the North East Coast of the Island of Tahiti, Le Tahiti by Pearl Resorts is ideally positioned away from the hustle and bustle of Papeete town centre and port (7km, 10 min), and a little further from Faa'a international airport. Spread over 4 hectares of exotic tropical gardens facing 900 meters of the finest black sand volcanic beach sits this destination resort. MATAVAI Bay, famous for its historical site and recognised as the cradle of the royal Tahitian family where celebrated navigators anchored once upon a time ... And where today, visitors can create their own personal experience. Welcome, that is how you will feel when you arrive at Le Tahiti by Pearl Resorts. As soon as you enter your room, you will really feel at home.



Te Moana Tahiti Resort



Located between land and sea, Te Moana Tahiti Resort gives you the ideal setting for your stay in Tahiti, in an authentic Polynesian decor. Relax by the overflowing swimming pool, enjoy a meal in one of the two restaurants and appreciate the sunset over the island of Moorea. Te Moana Tahiti Resort provides you with all the services that you will need, with its fitness centre, its activity centre, Te Moana Explorations or even its wellness centre, Hononui. Connect with the Polynesian authenticity and explore the diversity of Tahiti where the lush of the valleys meets the waves of the Pacific ocean.

Authentic Tahitian experience. Oceanfront suites with kitchenettes. Infinity Pool with sunset views of Moorea, Direct lagoon access.

Hilton Hotel Tahiti

Where tahitian elegance begins, between airport and city centre

Where Tahitian elegance begins. For those seeking an enchanting rendezvous. Built on the land of the ancient royal family, Hotel Tahiti - the predecessor to Hilton Hotel Tahiti - first opened its doors in 1960, welcoming the first international tourists to the island of Tahiti. Hotel Tahiti soon became a major hub of social life. Many renowned celebrities stopped by the iconic hotel: Marlon Brando, Brigitte Bardot, Alfred Hitchcock, The Beatles...

Hilton Hotel Tahiti is the all-new elegant oceanfront hotel in French Polynesia that celebrates a rich island heritage and an ideal central location. Featuring 200 stylish rooms and suites, of which 160 have spectacular ocean views, 4 restaurants and 2 bars including an Italian fine dining overwater venue and the largest pool in Tahiti along with a wellness centre and a 24-hr fitness centre. Guests are greeted upon arrival to an open-air lobby offering spectacular ocean views, warm tones and a light, airy sense of place.

Experience a refined culinary experience through four on-site restaurants. La Strada, an Italian bistro, transports you to the heart of Italy, while San Sushi Bar showcases the best flavors of Japan. Moevai Restaurant is the breakfast overwater venue, and Taitea features a brasserie-style cuisine around simple dishes and local specialties. The all-day lobby bar offers a bespoke collection of wines and spirits while the poolside lounge and bar provides a wide range of cocktails along with a selection of snacks and tapas.



Vanira lodge

Find harmony and tranquillity at this traditional French Polynesian Lodge

On the leeward coast, facing the setting sun, Teahupoo is a village at the end of the world. The road gives way to a seaside path that leads to the cliffs of Pari and the vast expanses of Fenua Aihere where "Nature Men" still lived until recently. Nothing has changed here. Fishing, food crops, crafts and above all the kindness of the inhabitants, this is the Polynesia of yesterday and today. Here everything is enchanting, and it is here you will find Vanira Lodge.

Surrounded by mountains on a plateau overlooking the lagoon, Vanira Lodge has amazing views no matter where you are in the grounds. Relax in the swimming pool facing the sea, have a bite to eat in the on-site restaurant or sit back and take in the natural wonder from your fare. If you want to venture out, Teahupoo village and surfing beach is just a 15-minute walk away. Bicycles and kayaks are available to rent, free of charge, and snorkelling, diving and surfing trips can be arranged by the friendly staff.

Vanira Lodge is perfect for couples and groups of friends wanting to retreat to nature and see the natural beauty of Tahiti.



ISLANDS OF TAHITI MOOREA



© Tahiti Tourisme - Myles McGuinness

“Wherever you are on Moorea, the colours, scents and serenity sweep you up”



Fall in love with this heart-shaped island flanked by two stunning bays. Deep blue waters, fragrant frangipanis and unmistakable serenity capture your spirit as soon as you arrive after a short 15-minute flight from Papeete. With its isolated waterfalls and lush valleys, Moorea is the perfect place to unwind through yoga, meditation or massage. Marvel at the abundance of fresh pineapple, banana, mango, coconut and vanilla, sample the local rum and jam before treating yourself to a gastronomic adventure to delight your tastebuds. In an unforgettable culinary experience, be wowed as a local chef proudly serves up diverse, delicious Tahitian cuisine and street foods.

Escape by outrigger canoe to your own sun-soaked private motu picnic besides sparkling clear tropical water. Lose yourself in a candlelit beachfront dinner, experiencing the magic of starlit skies above reflective

waters as you wine and dine barefoot in South Pacific style. Stroll to the lookout for a panoramic view of the breathtaking scenes from above, the dual bays of Cook and Opunohu flanked by dramatic volcanic peaks. Capture a taste of culture at the Polynesian village of Tiki; sense the religious significance and sacred serenity at majestic temples and forest maraes.

Take a lagoon tour by boat to wonder at the colourful marine life, or relax in a motorised outrigger canoe or catamaran at sunset. For an extra splash of nature and traditional ways, a culture tour can include net fishing, where you cook the catch. Even beginners can be guided through a horse ride in Belvedere Valley or, as in so many spots in French Polynesia, drink in a stunning sunset on-board a cruise. Wherever you are on Moorea, the colours, scents and serenity sweep you up.

ACCOMMODATION

- 01. Moorea Beach Lodge
- 02. Hilton Moorea Lagoon Resort & Spa
- 03. Manava Beach Resort & Spa Moorea
- 04. Sofitel Kia Ora Moorea Beach Resort

POINTS OF INTEREST

- 05. Belvedere Lookout
- 06. Tiki Theatre Village
- 07. Moorea Dolphin Centre



MOOREA 17°32' S 149°50' W
 Area: 134 km2 (52 sq mi)
 Highest Point: Mont Tohive'a - 1,207 m (3960 ft)
 Flight to Tahiti: 15mins



© Tahiti Tourisme - Tahiti Fly Shoot



© Tahiti Tourisme - Stéphane Mailion

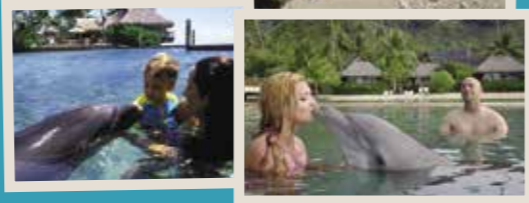
© Tahiti Tourisme - Stéphane Mailion



DOLPHIN WATCHING & ENCOUNTER AT MOOREA DOLPHIN CENTRE

For more than 25 years, the Moorea Dolphin Centre has been offering educative and interactive programs with their dolphins to help the public better understand and respectfully approach these magnificent marine mammals. This tour allows you the opportunity to do just that. The educational manea program starts with a 15 minute presentation where you will learn about marine mammals, in particular about dolphins, their evolution, anatomy and habits, plus learn how to protect them and preserve their fragile environment.

Afterwards there is a 15 minute interaction with a dolphin in shallow water accompanied by a trainer. Resident bottlenose dolphins Hina and Kuokoa are eager to welcome you into the waters and you will be able to touch and play with them for an unforgettable experience. This program has been carefully developed with the help and expertise of local and international specialists in order to respect the quality of life of the animals.



CAPTAIN TAINA'S GLASS BOTTOM BOAT & SNORKEL TOUR

Discover the underwater beauties of Moorea! Seated comfortably in a glass bottom boat observe turtles, stingrays, small black tip sharks and tropical fish while Captain Taina shares her knowledge of the local marine life. Afterwards immerse yourself in the turquoise waters of the lagoon and explore the seabed with fins and snorkel. Lunch is a BBQ feast served on a small private island you are free to explore.



MOOREA FOOD ADVENTURE

Slip into the flip-flops of a Polynesian, warm up your taste buds and get ready for a half day of discovery and nibbling around Moorea! "Tama'a" means to eat in Tahitian and that is exactly what you will do on this food adventure. During this culinary tour you will savour the unique flavours of local specialties in places where the locals love to eat. Be prepared for some tasty treats that draw on Tahitian, French and Chinese cuisines.



ATV ADVENTURE TOUR

Enjoy the beauty of Moorea and access places inaccessible to standard vehicles on this off-road adventure. Take an 8km drive on the coastal road before heading inland to take in the Belvedere panoramic view. Visit Lycée Agricole plantations and learn about the tropical flowers and fruits. Be brave and tackle the river crossing and valleys en-route to Magic Mountain's peak for a breathtaking 360° view of Moorea, its lush interior and turquoise lagoon.



BELVEDERE GUIDED E BIKE TOUR

Wish to discover the island of Moorea differently? Let yourself be tempted by an electric bicycle! Fun, easy to ride, ecological and fast. An experienced guide will take you to the best viewpoint of Moorea: The Belvedere! A must-see spot with stunning views over Cook and Opunohu Bays! Roll through the pineapple plantations, stop in at the agricultural school to taste local jams and visit Moorea's sacred and historical sites.



SEA SCOOTER SNORKELLING TOUR

Explore the crystal clear waters of Moorea lagoon on a Seadoo underwater scooter. Easy to handle, you can travel great distances without effort. Discover the beauty of the coral and the wonder of the marine life with your Easybreath snorkel masks. They offer a wide field of vision and comfort so you can easily marvel at the underwater views. Your experienced guide is on hand to ensure an original and fun adventure.



TIKI THEATRE VILLAGE – TAHITIAN FEAST DINNER & SHOW

Meet the Polynesians who will help you discover their culture, food and dances. Feast on dishes cooked in the traditional earth Tahitian oven along with local salads, tropical fruit and homemade pastries before taking your seat to watch the show. Enjoy the music, the singing and the dancing - it's a captivating evening filled with colour, passion and mana. You'll leave feeling part of the French Polynesian family.



Escape and unwind on this heart-shaped tropical island known for stunning landscapes and absolute peacefulness. The resort is located in front of the lushest coral garden of the island with beautiful views of the lagoon. Located North, between Cook's Bay and Opunohu Bay, it is a 20-minute drive from the local airport and 25 minutes from the ferry docks.

Decorated in a modern Polynesian style, the garden bungalows are set amid lush gardens and feature plunge pools hidden behind walls of beautiful teak. The resort features connecting bungalows that are ideal for families, but also more spacious individual units offering perfect privacy for couples. The overwater bungalows are the real Polynesian dream! Relax in style, enjoying magnificent lagoon and mountain views, or dive straight from your private deck to discover the wonders of the island's crystal blue waters.

Hilton Moorea is ideal for guests seeking a unique resort with privacy, exceptional service and a relaxing environment in harmony with the Polynesian culture. Featuring 104 bungalows, 3 bars and restaurants and a blissful Spa, Hilton Moorea is your perfect getaway!

Beach location. Overwater Restaurant. Spa. Free Minibar. Flexible Meal Plans



Moorea Beach Lodge

Boutique Guesthouse located on one of the finest beaches in Moorea



Moorea Beach Lodge is a charming boutique guesthouse ideally located on the west side of Moorea Island. It is a little corner of paradise along a private white sandy beach - one of the finest in Moorea - facing the turquoise lagoon. Though perfectly secluded from the outside world, it is only a few minutes' walk to the nearby village that's bustling with local restaurants and shops. Tiki Village Cultural Centre and Maison Blanche are local landmarks, and the area's natural beauty can be seen at Painapo Beach and Tiahura Beach. The outdoor activity options available are just as plentiful. The lodge provides all guests with free kayaks and bikes, and can arrange for scuba diving, snorkelling, and ray feeding.

Inspired by both Polynesian and colonial influences, the Moorea Beach Lodge has been imagined as a large house articulated around a majestic tree that gives this place a peaceful and friendly atmosphere. The 23 bungalows are located around the main house, facing the beach or the beautiful garden. Each of these is a comfy cocoon, your perfect shelter for a stay in paradise. The peacefulness of the lodge and its beauty will be appreciated by all.



OTHER ISLANDS of TAHITI

French Polynesia is a wonderfully diverse world of island paradises waiting to be further explored. The further you venture, the more this tropical heaven is yours alone to quietly savour. A 45-minute flight from Papeete is the tranquil and stunning protected lagoon of Taha'a. Home to mesmerising Ha'amene Bay, the deepest in Polynesia and an aquatic wonder of coral gardens, Taha'a is famed for its serenity, timelessness and fragrant vanilla farms. Lose yourself in the rhythms of traditional dance and song on the lagoon shores and mountains rising in the background at this lesser-known jewel.

Experience the wild, unspoilt and secluded beauty of Huahine, just 40 minutes' flight from Papeete. A crystal-clear lagoon is yours to indulge in while you soak up the slower pace of life. Savour delicious vanilla, melons and bananas, watch the locals with their old-school fishing techniques and absorb the rich culture heritage, highlighted by more than 35 religious marae, and the Fare pote'e (round-ended traditional house).

Sail into paradise at Raiatea (Hava'i), the region's second-largest island boasting deep-blue, calm waters and a majestic sense of timelessness.

Head upriver to the natural beauty of the botanic garden, a genuine joy for the senses with its vivid colours and scents. A hub of spiritual worship with historical temples, archaeological treasures and the spectacular sacred marae Taputapuatea, Raiatea is only a 45-minute flight from the capital but feels another world away.

One of the world's great destinations for scuba diving and snorkelling, Rangiroa (1-hour flight) is famed for its dark and fragrant, award-winning honey. The villages of Avatoru and Tiputa offer an intimate look at South Pacific living and on the handful of roads, stumble upon small shops, churches and craft outlets. See unique vineyards anchored on coral and framed by coconut trees and relax by the region's largest lagoon.

Witness sacred sites and untamed natural attractions at Nuku Hiva, a 3.5 hour flight from Tahiti. Famed for its ancestral art and carved tiki, including the imposing 12-metre high Tuhiva, a warrior/guardian tribute. Intrepid travellers are rewarded with majestic banyan trees, a pine-wooded valley and the Vaipo waterfall (tallest in Polynesia) on this remote island of wonder.



© Tahiti Tourisme - Hélène Havard

© Tahiti Tourisme - Stéphane Mailion

“The further you venture, the more this tropical heaven is yours alone to quietly savour”

RANGIROA 14°57' S 147°38' W Area: 137 km2 (53 sq mi) Island Group: Tuamoto Islands Flight to Tahiti: 1 Hour	LE NUKU HIVA 8°49' S 140°12' W Area: 387 km2 (149 sq mi) Island Group: Marquesas Islands Flight to Tahiti: 3 Hours 40 mins
--	---

01 Hotel Kia Ora Resort & Spa Rangiroa
02 Le Nuku Hiva by Pearl Resorts

French Polynesia

The Society Islands
Tupai, Bora Bora, Taha'a, Huahine, Raiatea, Tahiti, Moorea, Maiao, Tetiaroa

Tuamoto Islands
Rangiroa, Anaa, Apakati Atoll, Takapoto, Teavaroa, Manihi

Austral Islands
Tubai 648km (402miles) to Papeete

Gambier Islands
Gambier 1649km (1025miles) to Papeete

Marquesas Islands
Nuku Hiva 1401km (870miles) to Papeete
Hiva Oa, Fatu Hiva

TAHA'A 16°37' S 151°29' W Area: 53 km2 (33 sq mi) Island Group: Society Islands Flight to Tahiti: 45 mins	03 Le Taha'a by Pearl Resorts
RAIATEA 16°48' S 151°26' W Area: 148 km2 (92 sq mi) Island Group: Society Islands Flight to Tahiti: 45 mins	04 Raiatea Lodge 05 Moto Nao Nao
HUAHINE 16°44' S 151°0' W Area: 74 km2 (29 sq mi) Island Group: Society Islands Flight to Tahiti: 40 mins	06 Maitai Lapita Village Huahine



Le Taha'a by Pearl Resorts welcomes you into a world of pristine beauty, a timeless universe of bare sophistication and authenticity. Located on the secluded Motu Tautau, facing the island of Taha'a on one side and stunning views of Bora Bora on the other side, the resort inspired by Polynesian architecture and style hosts 58 beautiful suites and villas, three restaurants, a spa, a Fitness center, a tennis court, an open air swimming pool, a scuba diving center and a helipad. Le Taha'a is the promise of a complete change of scenery, a way of life of its own, in harmony with its preserved environment, people and the local culture.



The Hotel Kia Ora Resort & Spa is located on the north-eastern coast of Rangiroa between the two passes of Avatoru and Tiputa. Surrounded by a lagoon with crystal clear waters on one side and by a lush coconut plantation on the other, the resort combines this convenient setting with a hidden seclusion. The architecture of the resort is elegant, refined and a tribute to traditional Polynesian craftsmanship, resting in perfect harmony with the natural environment. The resort has a long standing commitment to authenticity and exceptional Polynesian hospitality.

The spacious and nicely appointed villas and bungalows at the Hotel Kia Ora Resort & Spa are positioned in the garden, on the beach, or over the lagoon. The beach suites have their own Jacuzzi, while the garden villas feature an enclosed yard with private plunge pool. Here you will find the only overwater bungalows in Rangiroa. The resort's shared infinity pool provides an added touch, blending seamlessly into the endless horizon. The main restaurant, Te Rairoa, serves the finest French cuisine in a sophisticated setting, while the adjacent Miki Miki Bar extends over the lagoon for an unforgettable cocktail hour on the water.

*Hidden Seclusion & Unexpected Luxury.
An experience like no other.*



If you're searching for an unforgettable vacation in a place both authentic and mystical, Maitai Lapita Village welcomes you to the island of Huahine, known for preserving its places in their wild state. Be seduced by the richness of the island, its history and cultural heritage, the stunning scenery, beaches and marine life. Don't forget to visit the archaeological sites and hear from the Polynesians the wonderful secrets which abound in Huahine.

The Maitai Lapita Village Huahine lies between a lake and the lagoon, on an ancient archaeological site where Huahinean ancestors once lived, hence the name Lapita Village. This Huahine hotel offers excellent accommodation at a great price, welcoming hospitality, a restaurant and bar, a swimming pool, a multitude of activities and much more.

The Maitai Lapita Village Huahine is a dream destination for all divers, explorers, sea lovers and those who treasure vacations rich in emotions and discoveries. Your accommodation is traditional, immersed in the wilderness of the island, and authentic - making it the ideal place to stay while you discover the islands of French Polynesia.

*Traditional bungalow accommodation set amongst tropical gardens,
Welcoming staff. Discover the ancestral secrets of Huahine.*



Located within the lagoon of Raiatea, Motu Nao Nao is a private island escape from the demands of everyday life. The island abounds in lush flora and fauna, gifted with two idyllic beaches. As an all-inclusive retreat, the island is available for exclusive use for up to 6 guests. Artfully designed, the three villas are steps from the beach and lagoon accommodating 2 guests in each. The main villa has an extraordinary outdoor living space for dining and relaxing, as well as containing a fully equipped kitchen, wine cellar, mini bar replenished daily, state of the art sound system and projector. Included activities range from paddle boarding and sailing to visiting a black pearl farm and a sacred marae site on the island of Raiatea. Or explore your 25 hectare paradise and relax with a cocktail while enjoying the peaceful sounds of nature. Motu Nao Nao has its very own private chef preparing meals from locally sourced ingredients. Everything that is served is gathered ethically and responsibly. Just 40 minutes flying time from Tahiti, Motu Nao Nao is easily accessed by boat or helicopter providing a personalised service while maintaining attention on sustainable experiences with a small ecological footprint.

Set on the hillside, in a lush tropical garden, Le Nuku Hiva by Pearl Resorts offers an unobstructed view of Taiohae Bay. Here, between the ocean and the mountain, the sun sets the pace of the day, deploying the charms of its energizing glow every morning, and the promise of enchanting tomorrows every evening. The Lodge and its 20 spacious bungalows will be the ideal base from which to explore the island and its countless treasures. Each attentively decorated bungalow combines modern comfort and local materials, sculpted or embellished by Marquesan artists. A pleasant walk will take you to a black, warm sand beach and the small town of Taiohae. At the end of the day, from the pool or the bar, relax and let Mother Nature cradle you in its generous embrace. Le Nuku Hiva by Pearl Resorts experience aims to be authentic, laid-back, in harmony with the Marquesan life philosophy.



Raiatea Lodge

An intimate atmosphere where you can easily isolate & relax.



The Raiatea Lodge Hotel is a small charming 3-star hotel, located on the west coast of Raiatea. Only 5 minutes away from the airport and 10 minutes from downtown Uturoa and its famous covered market, the hotel boasts an ideal location. Situated not far from the Tapioi and Temehani mountains, it will appeal to hiking and botanical enthusiasts. Moreover, its secluded location gives it a special charm and protects it from the prevailing winds, which are particularly felt from June to October.

The Raiatea Lodge Hotel blends in with the landscape but is certainly not lacking in character. Its warm atmosphere and sophisticated decoration make it a friendly place, perfect for relaxation. Set within tropical surrounds of more than one hectare the hotel comprises a main lodge house with several bungalows nestled throughout the grounds. After passing through the coconut grove, you will arrive at the spacious main lodge with its distinctive colonial style, which houses the guest rooms upstairs, and the suite, the bar and the restaurant on the ground floor.



As the original cruise company in French Polynesia, Aranui Cruises has been introducing the enchanting Marquesas Islands to avid adventurers for more than 30 years. Aranui 5, a custom built passenger freighter, is unique in every way. Combining the comforts and modern conveniences of a cruise ship while providing a cargo service to remote areas, the ship acts as a lifeline for tiny communities far removed from civilisation. This boutique vessel offers an intimate and casual setting for guests to explore French Polynesia. Nearly all of the crew are proudly Polynesian and delight in sharing their beautiful homeland with visitors. Their insider's perspective and openness creates an atmosphere unlike any other cruise line sailing Tahitian waters. Whether at special dinner events, as part of the on-board entertainment or assisting you from ship to shore on the tenders, you will become well acquainted with the lively and talented crew members.

Four itineraries cover all five of the Islands of Tahiti archipelagos, giving you a chance to experience rarely visited parts of French Polynesia all the way out to Pitcairn Island, 2000km east of Tahiti. There is no shortage of cultural experiences to keep you entertained on board, with dancing, live local music, language guides, palm frond weaving and guest speakers on Polynesian history and culture. All while you dine out in casual yet classy surrounds, tucking into magnificent cuisine blending Polynesian and French influences. Choose from a tempting array of extras such as fishing trips, horseback riding, diving, glass bottom boat trips, ray/shark feeding and island tours by truck or canoe. Meet new friends at the bar, relax on the deck or by the pool as the islands float by or if you seek privacy retreat to your stateroom balcony. Every day presents a new opportunity to experience something new.



Soft adventure. The road less travelled. Cultural immersion. The trip of a lifetime. The heart and soul of Polynesia.



AIR TAHITI NUI

It's time to explore ... Tahiti

Founded in 1996, Air Tahiti Nui (TN) is French Polynesia's national airline, flying from Tahiti to Auckland, Los Angeles, Seattle, Paris, and Tokyo.

Getting to the Islands of Tahiti from Australia with Air Tahiti Nui is easy! With codeshare partner airline, Qantas, operates flights from Australia to Auckland, and from there Air Tahiti Nui operates a non-stop Boeing 787 Tahitian Dreamliner service between Auckland and Papeete up to three times per week.

Air Tahiti Nui offers three classes of service on their Tahitian Dreamliner: Poerava Business, Moana Premium, and Moana Economy.

Each of the 30 seats in the award winning Poerava Business cabin is designed to deliver optimal comfort and converts to a 180-degree full-flat seat. You will also enjoy priority check-in, priority baggage, airport lounge access, additional baggage allowance, and a luxury personal accessories kit.

The Moana Premium cabin offers 32 seats that deliver a more comfortable economy flying experience with extra leg room and relaxation space. Added benefits include an additional baggage allowance, priority check-in, and priority boarding.



Air Tahiti Nui believes that your holiday is a journey that begins the moment you board the aircraft, and the inflight menu provided is an integral part of setting the stage. Their chefs have considered every detail and developed dishes that will add to and complement the rich sensory experience that awaits. Combined with the wine list, which is influenced by their French history, these tastes are meant to reinforce the vividness of your travel.

Every seat on the Tahitian Dreamliner features a Touch Screen Entertainment system via Panasonic's most advanced Inflight Entertainment (IFE) system. Audio Video on Demand (AVOD) at every seat through multi-touch screens ensures that every passenger enjoys an immersive and entertaining experience. Guests will be able to stay connected with Panasonic's eXConnect satellite broadband.

It's time to explore ... Tahiti!



All photos on page © Air Tahiti Nui



WEDDINGS

We have the perfect wedding for you

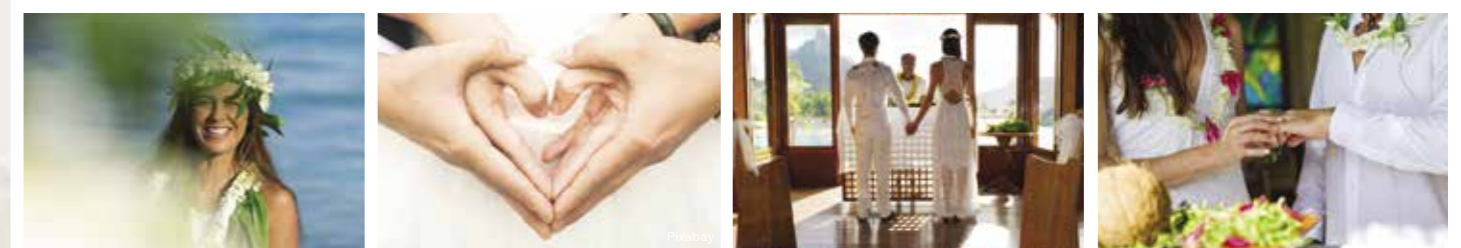
Planning a wedding should be a breeze. A warm Pacific breeze... heady with the scent of tropical flowers and gentle like a romantic caress. Instead of oceans of stress, the awesome team at Omniche Holidays can help you find a gorgeous paradise isle, share in your romantic vision, and turn your wedding dream into a reality. We are experienced wedding professionals, meaning that you don't need to become one overnight.

Choosing to have your wedding in the Islands of Tahiti may be one of the best decisions you'll ever make. Amid such effortless calm and beauty, love feels at home. Far away from crowds, commitments, traffic and home grown expectations, the holiday atmosphere allows the whole wedding party to relax.

To oversee the wedding plans, you will be able to liaise directly with the wedding coordinator at your chosen location. Any wedding of any size can be arranged, tailor-made to your desires, or we can walk you through our great package deals. Arranging flights and accommodation for family and friends is our speciality, as our wedding planner works intimately with our consultants to ensure that each guest arrives to the location on time, from any port in the world.

We guarantee personalised service, years of experience, and a genuine desire to see you enjoy each stage of your wedding plans. As you sit in the comfy director's chair, tropical drink in hand, we'll work hard to ensure that your vision comes to life. The Islands of Tahiti know romance...and we pride ourselves on knowing the Islands of Tahiti.

All photos on page © Tahiti Tourisme - Grégoire Le Bacon unless stated otherwise



OMNICHE
HOLIDAYS

Exotic South Pacific. Expertly Packaged.

Free Call: 1800 111 653 Ph: 07 3221 3381 Fax: 07 3221 7899 res@omnicheholidays.com



© Tahiti Tourisme - Mark Fitz

The summaries of these booking terms & conditions apply to all Omniche Holidays bookings. Full booking terms & conditions can be downloaded from www.omnicheholidays.com. Everyone named in the booking will be deemed to have accepted these conditions.

Suppliers: Omniche Holidays does not itself provide transport, accommodation, tours and/or events. In making your travel bookings, we act only as an agent for other service providers, whose terms and conditions may limit or exclude their liability to you.

Brochure: Validity from 01/07/2022 to 31/12/2023 and should be used as a guide only.

How to Book: Call or visit a licensed travel agent who will assist you in making a reservation. Your licensed travel consultant will request a reservation on your behalf and will be responsible for communicating your requirements to us, managing your booking and forwarding your payment to us. Anything not specifically included in the quoted holiday package is at your own expense.

Booking Fee: Your travel agent may apply a booking fee in addition to the price Omniche Holidays quotes them for your holiday. Additionally, Omniche Holidays may charge a booking fee.

Prices: The prices in this brochure are correct as at 01 April 2022 and are subject to change. All prices are an indication and are based on the cheapest tour option. All prices have been calculated based on per person for travel during low season. Low season travel may vary between destinations and service providers, please call us for more details. Omniche Holidays is not responsible for currency fluctuations and should these change, we reserve the right to apply a surcharge if applicable.

Payments: For bookings made more than 75 days before departure or 120 days for Tahiti, a non-refundable deposit of \$250 per person as well as any applicable airfare is required within 3 days of written confirmation. For bookings within 75 days of departure or 120 days for Tahiti, full payment is required before confirmation of booking can be given. Omniche Holidays reserves the right to pass on the specific deposit and final payment requirements from suppliers both land and air. If for any reason the deposit is not received by the due date Omniche Holidays reserves the right to cancel the booking as hotels, resorts and suppliers may impose strict deposit and booking terms. A deposit holds services requested but does not guarantee prices.

Cancellations: In addition to supplier cancellation fees, Omniche Holidays will retain \$250 per adult non-refundable deposits as a cancellation penalty. Cancellations after final payment may incur cancellation fees charged by suppliers amounting to all or part of the cost paid as stipulated in booking invoices. No refund is available for cancellations after the holiday has commenced or in respect of services not utilised.

Alterations by you: If you alter your package after confirmation, Omniche Holidays may charge a fee of \$50 per person, in addition to any charges levied by suppliers.

Product Descriptions: Omniche Holidays makes no specific representation as to the standard, class or description of accommodation or services provided. All descriptions featured are provided by suppliers, and facilities may change at any time.

Star Rating: While all care is taken promoting each property's rating, ratings should be used as a guide only and may change throughout the year as properties' circumstances change. The star ratings in this brochure are represented by palm trees as they do not meet the AAA Tourism Star Rating Scheme. All properties represented are self-rated, decided on by individual properties and is not in the opinion of Omniche Holidays.

Images: All images are used as a guide only and may be of varying room types. While all care has been taken to acknowledge Photographer's image credits, it is beyond our control should we have missed any acknowledgements.

Travel Insurance: Travel insurance is strongly recommended by the Department of Foreign Affairs and Trade for all overseas travel. Please consider purchasing a travel insurance policy of your choice when booking.

Health and Immigration: Each passenger is responsible for their own visa, passport (with at least 6 months validity), immigration, quarantine, customs, health and other requirements of the countries visited including COVID-19 restrictions.

Limit of liability: Omniche Holidays provides its own services with due care and skill, but excludes all liability for any events beyond our control. We do not accept liability whatsoever for loss or damage including but not limited to physical and psychological injury, and loss or damage to property that may arise with the supply of goods or services provided by suppliers.

Destinations: Omniche Holidays makes no representation as to the safety and conditions that may exist at any destination. You should obtain travel advice from the Australian Department of Foreign Affairs and Trade (www.smarttraveller.gov.au).

Unhappy: If you are dissatisfied with an aspect of your holiday it is vital that you advise the supplier's manager of your dissatisfaction and they will try to solve the problem locally. If unable to get satisfaction from management you should immediately notify Omniche Holidays, preferably in writing, stating your reasons, and we will act immediately to assist you. Omniche Holidays cannot action appropriately if a complaint is lodged upon your return, which has not been previously drawn to the attention of the supplier.

Privacy: The client consents to providing us with necessary personal information for the purpose of making and completing travel related arrangements on their behalf. Omniche Holidays will only discuss booking information with the clients or their travel agent.

Law of contract: The laws of Australia govern these booking conditions and subject to any law which is expressly not consistent with this, any action arising

Cover•More

TRAVEL INSURANCE

Time to Explore again

Talk to your travel expert today about our COVID-19 benefits



Limits, sub-limits, conditions and exclusions apply. Insurance administered by Cover-More Insurance Services Pty Ltd (ABN 95 003 114 145, AFSL 241713) and issued by Zurich Australian Insurance Limited (ABN 13 000 296 640, AFSL 232507). Any advice is general advice only. Please consider your financial situation, needs and objectives and read the Combined FSG/PDS before deciding to buy this insurance. For the TMDs for these products, visit covermore.com.au

ISLANDS *of* TAHITI



OMNICHE
HOLIDAYS

Exotic South Pacific. Expertly Packaged.

Omniche Holidays - Exotic South Pacific. Expertly Packaged



Cook Islands

© Cook Islands Tourism - David Kirkland



Vanuatu

© Vanuatu Tourism



Lord Howe Island

© Lord Howe Island Tourism



Fiji

© Fiji Tourism - Mark Snyder



Solomon Islands

© Solomon Islands Tourism - Chris McLellan



Samoa

© Samoa Tourism



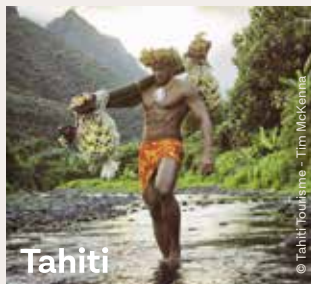
Niue

© Niue Tourism - Widescapes Photography



Norfolk Island

© Norfolk Island Tourism



Tahiti

© Tahiti Tourisme - Tim McKinnier



Tonga

© Tonga Tourism - Janice Blackwood



New Caledonia

© New Caledonia Tourism

Travel Agent



OMNICHE
HOLIDAYS

Exotic South Pacific. Expertly Packaged.

Omniche Holidays | **Head Office:** Level 4/144 Edward Street, Brisbane, QLD 4000
FreeCall: 1800 111 653 **Ph:** 07 3221 3381 **Fax:** 07 3221 7899 **Email:** res@omnicheholidays.com

IATA No. 02-359486

www.omnicheholidays.com